



# VARIO 101

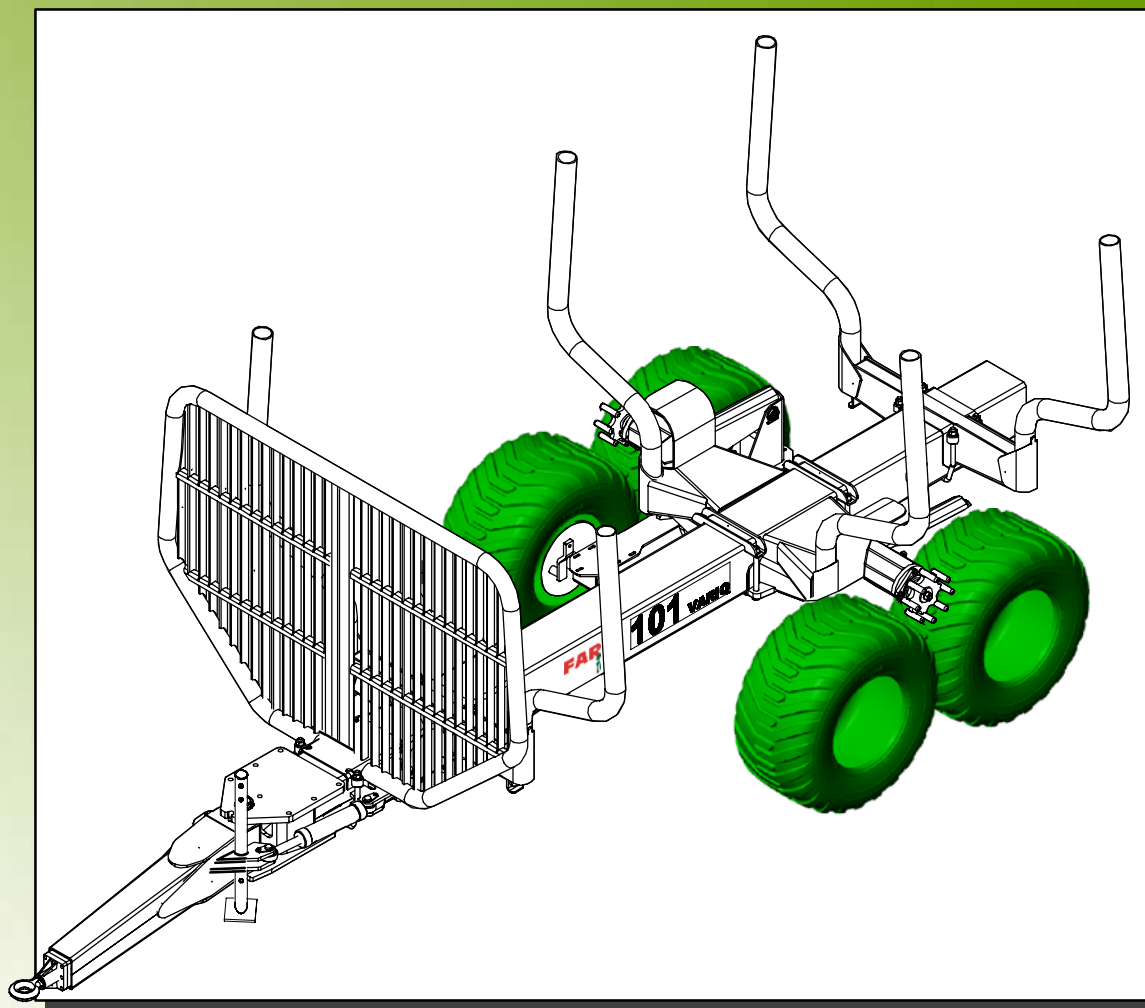
OPERATING, MAINTENANCE AND SPARE PARTS MANUAL

# FARMMI

## FOREST TRAILER

### VARIO 101

From serial number: 4091 001



IT IS VERY IMPORTANT TO READ THIS INSTRUCTION MANUAL THOROUGHLY BEFORE USING THE MACHINE.

**Farmi Forest Corporation**

Ahmolantie 6  
FIN-74510 IISALMI  
FINLAND  
Tel. +358 (0) 17 83 241  
Fax. +358 (0) 17 8324 372

---

# VARIO 101

---

---

## WARNING SYMBOLS IN THIS MANUAL

---



Imminent danger which could cause serious personal injury or death.



Danger which could cause personal injury.



Conditions or misuse that could damage equipment or machinery.

### NOTE!

Reminders, such as for performing checks or carrying out maintenance or repair procedures.

---

## INTRODUCTION

---

This manual includes the information and maintenance instructions required for operating the machine in the optimal manner.

Although you have experience in using this kind of machinery, read the operation and maintenance instructions carefully since they include information enabling efficient and safe operation. Regular maintenance is the best way to guarantee the efficient and economical performance of the machine.



**Each and every operator must read, understand, and follow all safety instructions and procedures.**

### CUSTOMER FEEDBACK

We are happy to receive your opinions and suggestions for improvements by mail, fax or e-mail. All implemented suggestions for improvements will be rewarded.

**GUARANTEE OF MACHINE CONFORMANCE  
TO EU REQUIREMENTS**

Farmi Forest Corporation  
Ahmolantie 6, FIN-74510 IISALMI, Finland

Informs that the machine, launched on to the market,

**Forest trailer**

*(make)*

**Vario 101**

*(type)*

*(serial number)*

conforms to Directives 98/37/EC, 89/366/EC to the amendments related to it as well as to the national statutes which bring them into force.

The following unified standards have been applied to the design of the machine:

**SFS EN ISO 12100**

The following national standards and specifications have been applied to the design of the machine:

**SFS EN ISO 12999**

**Iisalmi, Finland**

*(place)*



*Juha Hallivuori*

**24.04.2006**

*(date)*

**Farmi Forest Corporation**

Ahmolantie 6  
FIN-74510 IISALMI  
FINLAND  
Tel. +358 (0) 17 83 241  
Fax. +358 (0) 17 8324 372

---

# VARIO 101

---

|  |           |
|--|-----------|
| <b>SAFETY INSTRUCTIONS</b> .....                                       | <b>5</b>  |
| <b>STICKERS AND SIGNS</b> .....  | <b>10</b> |
| <b>MAIN PARTS</b> .....  | <b>11</b> |
| <b>TECHNICAL DATA</b> .....  | <b>12</b> |
| <b>DIMENSIONS</b> .....  | <b>12</b> |
| <b>MOUNTING</b> .....  | <b>13</b> |
| <b>OPERATION</b> .....   | <b>14</b> |
| PRE-OPERATION CHECKS .....   | 14        |
| DRIVING .....  | 14        |
| ADJUSTING THE COMPRESSION OF THE TRACTION ROLLERS .....                | 15        |
| USE OF THE brake power regulator (PNEUMATIC)(STANDARD EQUIPMENT) ..... | 15        |
| USE OF THE brake power regulator (HYDRAULIC) (OPTIONAL) .....          | 16        |
| <b>LUBRICANT RECOMMENDATIONS</b> .....                                 | <b>16</b> |
| <b>TROUBLE SHOOTING</b> .....  | <b>17</b> |
| <b>LUBRICATION SCHEME</b> .....  | <b>18</b> |
| <b>MAINTENANCE SCHEME</b> .....  | <b>19</b> |
| <b>VARIO 101 VARIATIONS</b> .....                                      | <b>20</b> |
| <b>SPARE PARTS</b> .....   | <b>22</b> |
| FRAME .....  | 22        |
| DRAW BAR + FRAME .....   | 26        |
| Traction unit .....  | 28        |
| Hydraulic cylinder for traction unit .....                             | 30        |
| Hydraulic cylinder for hydraulic steering .....                        | 32        |
| Hydraulic steering, compl. ....  | 34        |
| VARIO 4WD HYDRAULICS .....   | 36        |
| Hub, without brake, 6-bolts .....                                      | 38        |
| Hub, with brake, 6-bolts .....   | 39        |
| Hub, without brake, 8-bolts .....                                      | 41        |
| Hub, with brake, 8-bolts .....   | 42        |
| VARIO 101 HYDRAULIC BRAKES, accessory .....                            | 44        |
| Brake pressure limiter .....   | 45        |
| Tyres, compl. ....   | 46        |

# VARIO 101

These safety instructions are intended for both the owner of a FARMI machine and the persons who operate, service and repair the machine or equipment.

**The instructions help you to:**

- **familiarize yourself with the safe operation of the machine.**
- **operate the machine safely in order to avoid any damage.**
- **use the machine appropriately and productively.**
- **notice, avoid and prevent possible dangerous situations.**

These instructions have been provided by the manufacturer. The instructions must be kept in a special place reserved for them in the machine and they must always be available at the work site.

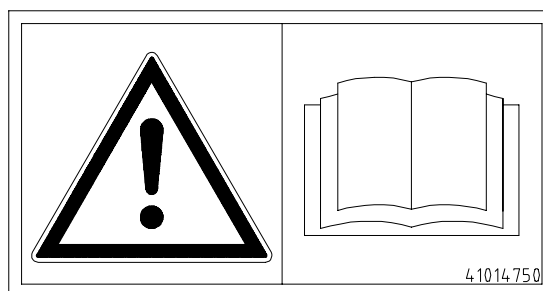
All operators are obliged to familiarize themselves with the safety and operating instructions of the equipment and apply them in practice.

The machine is in accordance with the technical requirements and the existing and necessary safety regulations. Despite this, faulty operation, service and repair may cause danger.

The requirement for all operation is that the operator is familiar with the operating instructions and follows them. It is therefore recommended that the instructions are read through several times and that the operator becomes familiar with the machine before it is taken into use.

In addition to the operating instructions, the operator must remember to act in accordance with the regulations of the local labour protection authorities, and the laws and statutes of the user country.

Using the equipment for any other task than for which it has been designed or to exceed its operating capacity is considered inappropriate usage. Any other kind of use of the equipment or machine is not acceptable. The manufacturer/ supplier does not assume liability for a damage resulting from such usage.



# VARIO 101

## 1. GENERAL SAFETY INSTRUCTIONS



Make sure that everyone who uses the machine is familiar with the manual, the contents of the safety instructions applying to each case and that he has been trained appropriately before taking the machine into use.

- Familiarize yourself with the capacity and limitations of the machine and equipment and the most effective operating technique.
- Familiarize yourself with the use and operation of the machine in detail before taking it into use.
- Familiarize yourself with the danger areas of the machine and prevent people from entering these areas.
- Do not walk or stand in the immediate vicinity of the machine, when it is in operation. During operation, prevent all unauthorized people from entering the working area.
- Make sure that all operators are provided with the necessary safety equipment such as a helmet, safety glasses, boots and the necessary safety clothing. Make sure that the equipment is operated in accordance with the regulations of the Labour Protection Law.
- Oblige the personnel to use additional safety equipment (helmet, safety boots, safety glasses, gloves) as necessary.

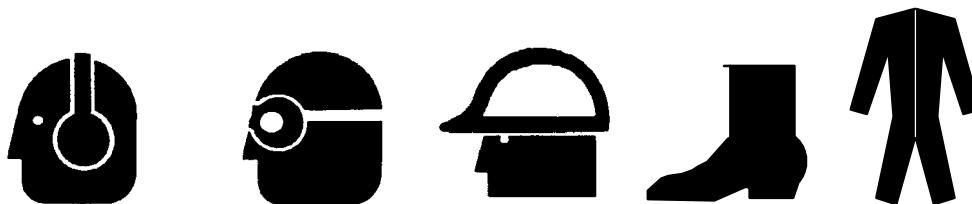


Fig. 1. Symbols of the safety equipment

- It is forbidden to use a machine which is out of order or faulty.
- Depending on its type, the machine has different kinds of safety equipment and safety guards. The purpose of these is to protect the equipment and its operator and, under no circumstances, should they be changed or removed.
- Allow only qualified and trained personnel to use and service the machine. Make sure that the new operators have received guidance and training.
- There must always be an updated operating instruction for the specific machine available. Make sure the personnel that they have understood the operating, maintenance, repair and safety instructions of the equipment.

### Make sure that:

- the use of faulty equipment is forbidden.
- the warning and safety equipment installed in the machine have not been removed or changed and that they are used correctly.
- the safety equipment are installed back in their place immediately after servicing has terminated.
- regular safety tests and corresponding inspections are carried out.

# VARIO 101

## IT IS TO BE NOTED THAT THE MANUFACTURER OF THE MACHINE IS NOT LIABLE FOR DAMAGES CAUSED BY

- faulty, careless and inappropriate use.
- changes made without the manufacturer's consent.
- spare parts, which are not original.
- natural wearing.
- operating errors caused by erroneous performances by an unqualified person.



**Occupational accidents often occur under unusual circumstances. It is therefore important to take all possibilities into consideration, even the most unlikely situations, which may occur in each job.**

- When using the equipment, the operator is responsible for the safety and danger zone of the entire operating area of the equipment.
- The operating safety of the equipment must be inspected every time before taking the equipment into use. If there are faults or defects to be detected, they must be repaired immediately.
- If it is impossible to abolish factors that endanger the operating safety, the work must be terminated.
- All safety regulations must be followed.
- All operating and service instructions must be followed.
- Do not use any piece of equipment unless you have thoroughly familiarized yourself with its operation.
- The operator must be familiar with the operation of the equipment and all its control devices.
- The safety systems must never be bypassed or removed to facilitate the job. The equipment must never be started up or used if any of the safety protective devices has been removed.
- Make sure before starting up or using the equipment that it will not cause any danger to people or property.
- It is forbidden to exceed the performance values given.
- It is forbidden to use the equipment when sick or under the influence of alcohol or other intoxicating substance.
- All the safety and warning plates in the machine must be legible and whole.
- Personal safety equipment must be worn inside the entire operating area of the machine.

### **It is forbidden to make any of the changes mentioned below without the manufacturer's consent:**

- Extension of pressurized pipes and hoses on material which is weaker than original material.
- The values set at the factory such as pressures, speed, capacity and the adjustment of the safety valves.
- Structural changes affecting durability.

**The operator must always have an unobstructed view over the working area. If this is not possible, an assistant must be appointed.**

- When faults occur that decrease the operation safety, stop the machine.
- Never try to touch moving parts when the engine is running or the pressure accumulator is pressurized.

---

# VARIO 101

---

- Only authorized professionals are allowed to repair electric and hydraulic damages.
- Only persons authorized by the manufacturer are allowed to weld load carrying structures. Ask an expert to check all welding.
- Service the machine regularly at prescribed intervals and remember the annual safety inspections.
- Always protect the machine against unauthorized use and unintentional operations when leaving it. For example the unintentional moving of the trailer on parking.
- The spare parts and equipment must always meet the requirements of the manufacturer. This can be ensured by using original spare parts.
- Before taking the equipment into use, the operator must also be familiar with the operation of the extras.
- Especially quick stroke–like loads require special caution
- In cold conditions, only recommended oils must be used.

**When lifting the machine, make sure that the lifting equipment is in prime condition.**

**The weight of the machine to be lifted must be known before lifting.**

Many countries have special laws and statutes related to lifting, hoisting cables and lifting equipment. Always follow the safety regulations required by local laws.

## 1.1. OILS AND GREASES

1. Always use only the types of oils recommended by the manufacturer. If these recommendations are not followed, it may damage the machine or cause the machine not to operate properly, which again may cause serious bodily injury or material damage.
2. Do not mix different kinds of fluids or oils together.
3. Remember that not all bearings are alike. Each bearing has its own characteristics and lubrication requirements. Follow the instructions provided by the manufacturer.
4. Use the control equipment with special care until the hydraulic oil has reached the correct temperature. Warm up the hydraulic oils in accordance with the instructions provided by the manufacturer.

---

## 2. SAFETY INSTRUCTIONS FOR THE HYDRAULIC CIRCUITS

---

1. Only trained and experienced technicians are allowed to install, repair or service hydraulic equipment.
2. Check the equipment for possible leaking. All leaks in the hydraulic system must be repaired before the equipment is taken into operation. Check all hydraulic hoses, especially those which have to bend in use and replace the hoses as necessary. Check that all the safety caps and filling plugs have been closed tightly.
3. Check that all the safety equipment such as pressure control valves, pressure gauges etc. are in place and in operating condition. You must know how to use them. **The safety systems must never be bypassed.**
4. All hydraulic hoses, which are in bad condition or leaking must be replaced.
5. It is forbidden to change the pressure values of any operation.



---

# VARIO 101

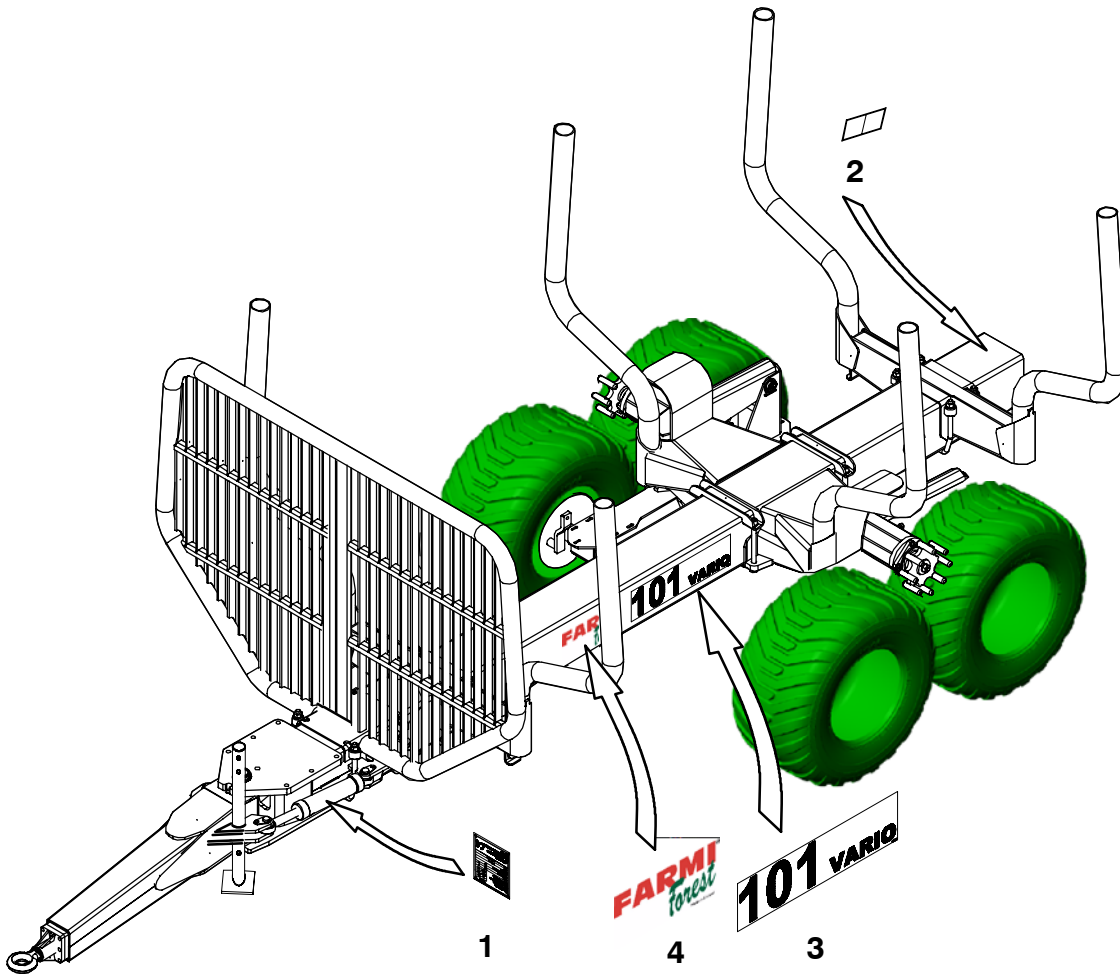
---

6. Check daily and always after damage the most important parts of the hydraulic system. Repair the damaged parts immediately.
7. Clean the surface of the components to be repaired. Do not use solvents when cleaning the parts.
8. Do not try to do repairs which you do not master.
9. Never try to do repairs in the hydraulic circuit, when the system is pressurized. A compressed oil jet may penetrate your skin and be lethal.
10. Do not use the equipment if the system has a leaking hose.
11. Make sure that all joints are tight and that the lines have not been damaged.
12. Do not work underneath a machine or component, which is only held up hydraulically. Use separate supports when servicing or repairing.
13. Do not disconnect the cylinders of the machine or their counter valves before the machine has been supported well.
14. The length and quality of the pipe connectors and hoses must correspond to the set requirements. When replacing or repairing the hoses, use original spare parts or hoses and connectors, which are in accordance with the manufacturer's recommendations. It is to make sure, in particular, that the pressure classes of the hoses and connectors correspond to the operating pressures.
15. All changes in the equipment require a written permit from the manufacturer.
16. Hydraulic oils do not normally evaporate easily. However, hot oil, splashes and oil fog (under pressure) are danger factors. Small amounts do not normally cause intoxication when inhaled or swallowed. Old, dirty oil is more dangerous than new oil.
17. If you get oil in your eyes, rinse them with abundant water and see a doctor.
18. Occasional skin contact is not normally harmful if the skin is healthy and there are no open wounds. You can wipe or wash the oil from the skin. The problem is repeated skin contact, which results in dry and chapping skin of the hands. The oil dissolves the natural protective grease layer off the skin and the skin gets small cuts and scratches easily. Hydraulic oil that penetrates the scratches can cause an inflammation and a rash.
19. If you cannot avoid splashes or skin contact, use safety gloves, glasses and clothing as necessary. Do not use oily clothes.
20. Hydraulic oil must not get into the environment, because it may pollute the water system and groundwater. However, if it is necessary to work in ecologically sensitive areas, mineral oil should be replaced by vegetable oil (rape—seed oil).
21. Store the oil in a closed vessels provided by the factory. Try to get the oil directly from the vessel into the tank.
22. If you must pour oil into other containers, it is important that they are clean. Also the caps, funnels, filters and filling holes must be clean.
23. Do not store oil out—of—doors to prevent water from condensing in the oil.
24. Always drain waste oils into a vessel and not into the environment.

# VARIO 101

## 3. STICKERS AND SIGNS

These stickers and plates must be found on the crane. Replace missing stickers or plates immediately.



|   |                |           |
|---|----------------|-----------|
| <b>Farmi Forest Corporation</b>                 |                | <b>CE</b> |
| Ahmolantie 6<br>FIN-74510 PELTOSALMI<br>FINLAND |                |           |
| TYPE  | FOREST TRAILER |           |
| MODEL   | VARIO 101      |           |
| SERIAL NO.                                      |                |           |
| YEAR OF MANUFACTURE                             | 200            |           |
| OWN WEIGHT                                      | 1580 - 1830 kg |           |
| MAX. TOTAL WEIGHT                               | 11800 kg       |           |
| 40146520  |                |           |

Fig. 1. Machine plate 40146520

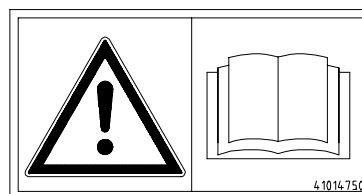


Fig. 2. Caution!  
Look at instruction manual. 41014750

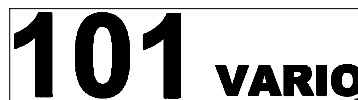


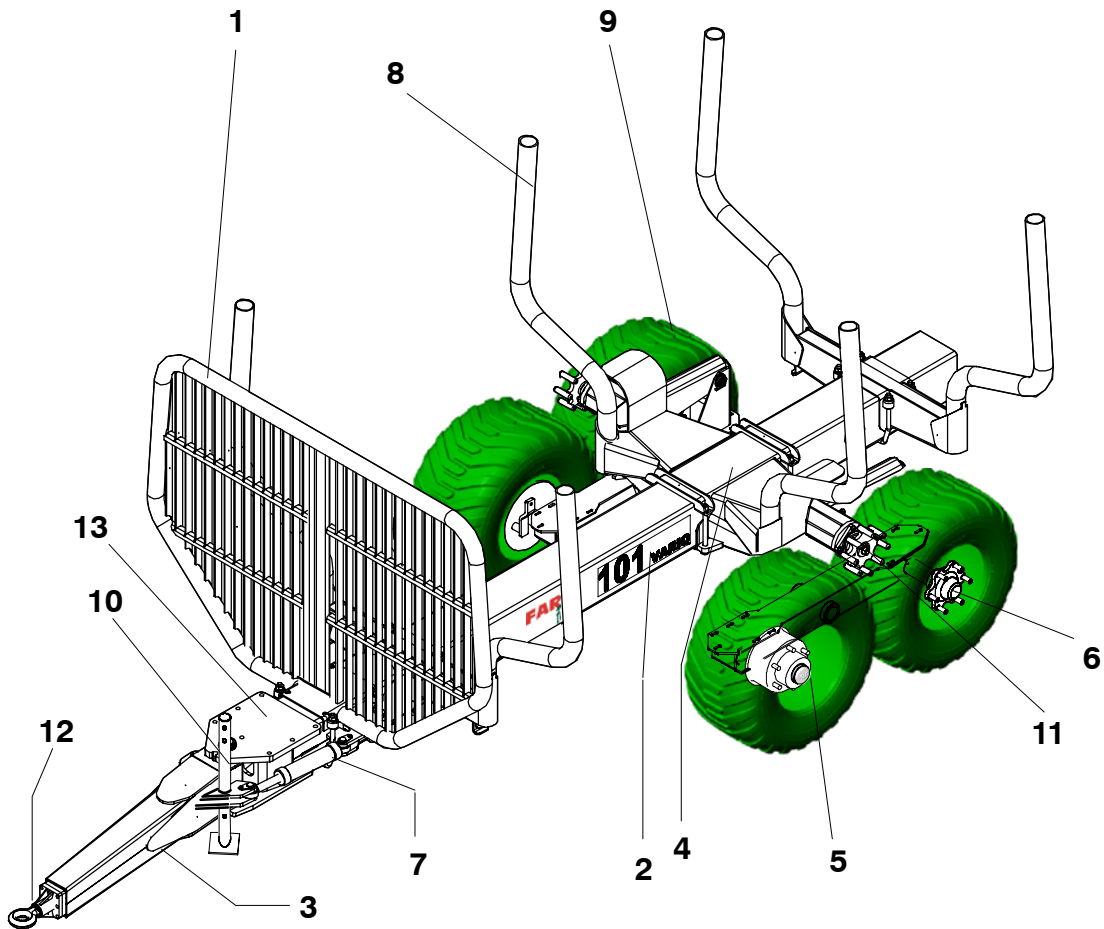
Fig. 3. VARIO 101-sticker 40146500



Fig. 4. FARMi-sticker 41016100

# VARIO 101

## 4. MAIN PARTS



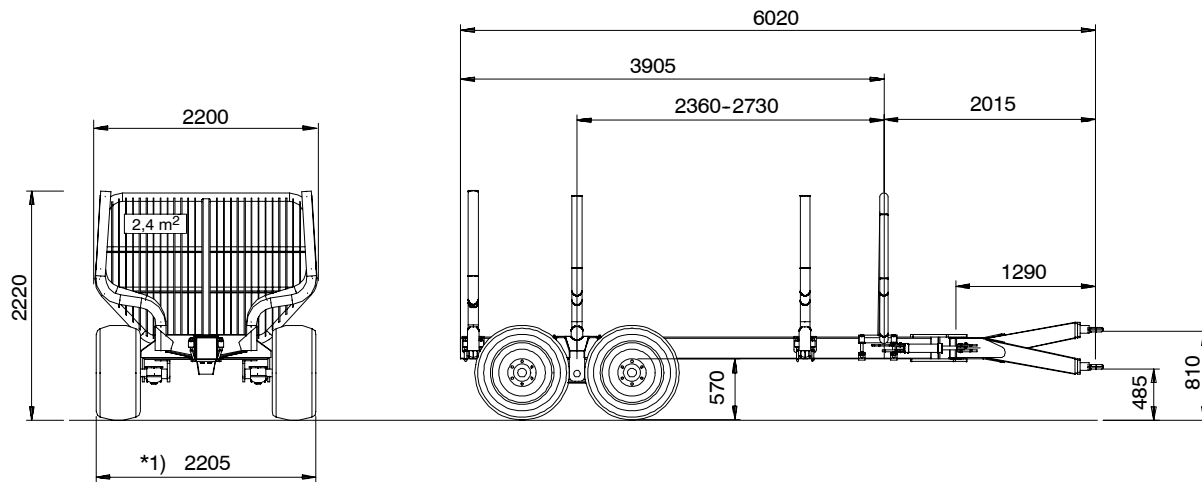
1. Screen
2. Central beam
3. Drawbar
4. Bogie
5. Hub with brakes(option)
6. Hub without brakes
7. Hydraulic steering(option)
8. Stay
9. Tyres
10. Stand
11. Traction unit (option)
12. Eye bolt
13. Mounting plate

# VARIO 101

## 5. TECHNICAL DATA

|   |             |  |                 |
|---|-------------|--|-----------------|
| <b>Loading capacity</b>                 |             | 11000 kg   |                 |
| <b>Own weight</b>                       |             | 1580-1830 kg   |                 |
| <b>Loading area</b>                     |             | 2,4 m <sup>2</sup>   | measure *1)     |
| <b>Tyres</b>                            | S/M boggies | 400/60-15,5 ELS (TT) PR 14                                     | 6 bolt hub 2205 |
|   |             | 500/50-17 TT PR14  | 6 bolt hub 2290 |
|   | L boggies   | 16/70-20 TT PR14   | 6 bolt hub 2205 |
| <b>Tyres 4WD</b>                        | S/M boggies | 400/60-15,5 ELS PR 14  | 6 bolt hub 2205 |
|   | M boggies   | 500/55-17 ELS PR 12  | 6 bolt hub 2290 |
|   | L boggies   | 550/45-22,5 ELS F328 PR 16                                     | 6 bolt hub 2410 |
|   |             | 550/45-22,5 ELS F328 PR 16                                     | 8 bolt hub 2450 |
|   |             | 500/60-22,5 F328, PR 16  | 8 bolt hub 2290 |
|   |             | 600/50-22,5 F328, PR16   | 8 bolt hub 2490 |
| <b>Hydraulic steering turning angle</b> |             | ± 40°  |                 |
| <b>Recommended cranes</b>               |             | FARMI HK 4066<br>FARMI HK 4166P<br>FARMI HK 4571 / 4581 / 5767 |                 |

## 6. DIMENSIONS



\*1) measure 2205 equipped with tyres 400/60-15,5 ELS (TT) PR 14

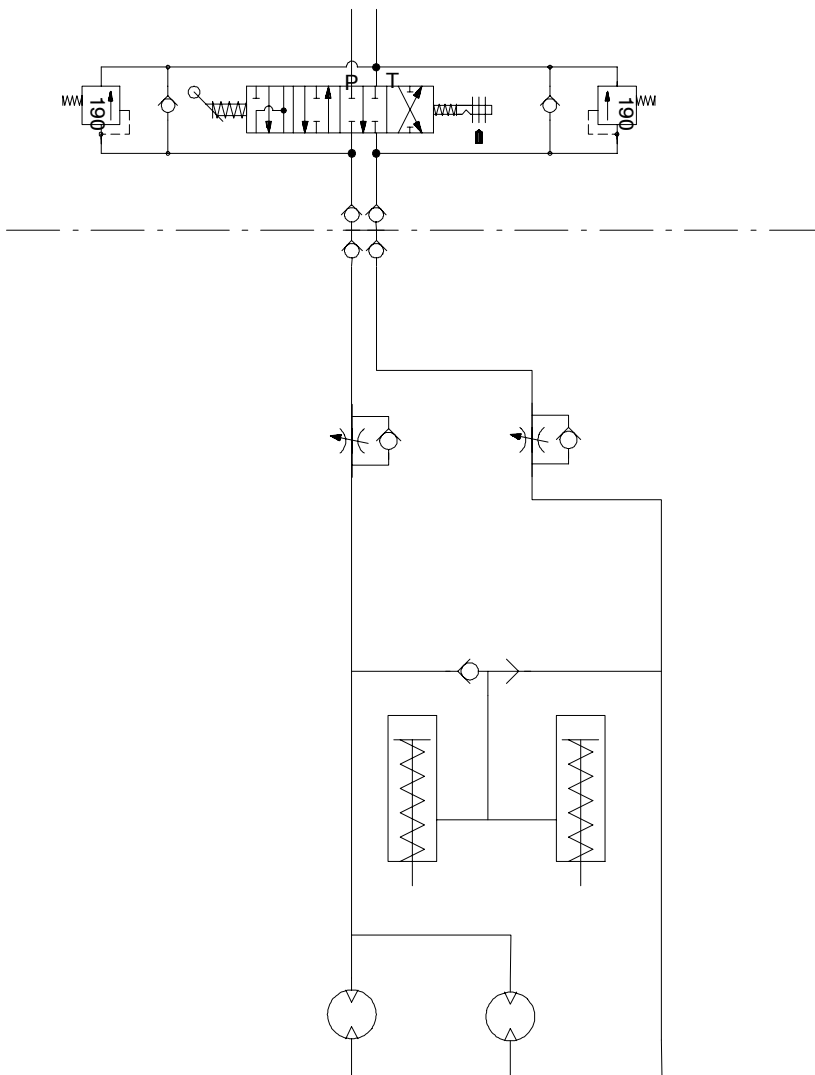
Fig. 2. Dimensioned drawing of VARIO 101.

# VARIO 101

## 7. MOUNTING

### 7.1. MOUNTING

1. If the trailer is not a ready-made one, the installation must begin by assembling the trailer. When the base frame has been assembled, the hydraulic hoses must be lead through the base beam to the connectors of the back part of the trailer. See the spare parts book the base frame assembly and connection of the hydraulic hoses.
2. Fix the trailer to the trailer hitch of the vehicle.
3. Connect the hydraulic system of the trailer to the hydraulic system of the vehicle. Connect the optional hydraulic steering to vehicle hydraulics.
4. For choosing the drive direction of a trailer with traction, the vehicle requires a double-acting, floating position directional control valve with two 190 bar check valves. The valve has three positions for traction: forwards, neutral and backwards. See the hydraulic schema below.



Kuva 1. VARIO-4WD hydraulic schema.

# VARIO 101

## 7.2. MOUNTING OF HYDRAULIC or PNEUMATIC BRAKES

The forest trailer can be equipped also with brakes. See the spare parts manual how to install hydraulic or pneumatic brakes. When the question is of the hydraulic brakes the hydraulic hose has to be connected to the 1–function control valve of the driving vehicle. The brake power regulator is available as an optional for the hydraulic brakes. Note that the red claw coupling is connected to the feeding line and the yellow claw coupling is connected to the brake line in 2–line brake systems. The brake power regulator is a standard equipment in the pneumatic brakes. In the brakes there is not a adjustment possibility. Check the brake shoes, if necessary or when the braking effects have weakened.

## 7.3. CRANE (optional) MOUNTING

The crane has to be installed on to the mounting plate on the frame. If you use crane HK 3861 and assembly base AP3800, then you have to make bevels to the mounting plate as shown below. Otherwise the crane will be installed normally.

## 8. OPERATION

### 8.1. PRE-OPERATION CHECKS

- Check the oil level in the vehicle hydraulic system.
- Ensure that the trailer is correctly coupled to the vehicle, that the hoses and the hydraulic components are correctly mounted and are functioning.
- Before driving make sure the brakes are disengaged.
- Check the tyre pressures. If needed, increase or decrease tyre pressure. Don't exceed recommended tyre pressures.
- Make sure that the directional control valve is in neutral position.

### 8.2. DRIVING

- Braking heavily will wear or even damage the brakes. Apply the brake steadily.
- If you use a hydraulic steering, do not suddenly overload the control cylinders.
- Be careful not to turn over the vehicle or the forest trailer.
- When needed traction, choose the driving direction by using the directional control valve. The traction must be switched off by turning the directional valve to the floating position (neutral) when the driving speed of the vehicle exceeds the traction speed produced by the pump. Pay attention to the fact that in that case the friction rolls will rise out of the traction position.



**When traction is engaged, the trailer cannot be pulled faster than the pump's output enables. Maximum traction speed at pump output 50l/min is 2,7km/h.**



**In prolonged constant traction, note the hydraulic oil heating.**



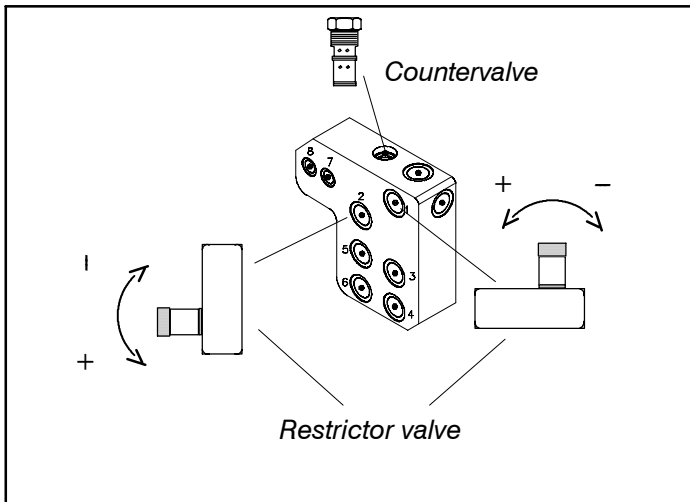
**DO NOT CHANGE DRIVE DIRECTION IN MOTION! Change the drive direction only when the trailer is standing still. Changing the drive direction in motion damages traction motors and wears out tyres.**

# VARIO 101

## 8.3. ADJUSTING THE COMPRESSION OF THE TRACTION ROLLERS

Adjusting the traction rollers compression is carried out by two valves.

- Open the valves fully open. For initial setting turn the restriction knobs 3–4 rounds in closing direction. If necessary to adjust the rollers compression turn the knobs to the opening or closing direction.



## 8.4. USE OF THE BRAKE POWER REGULATOR (PNEUMATIC)(STANDARD EQUIPMENT)

The brake power regulator is used to adjust the pneumatic pressure going to the brakes, thus adjusting the brake power. The regulator has a handle with three positions; empty, half and full load; representing trailer's state of load.

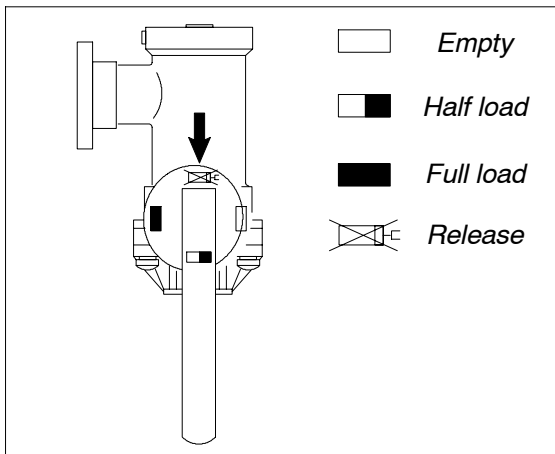
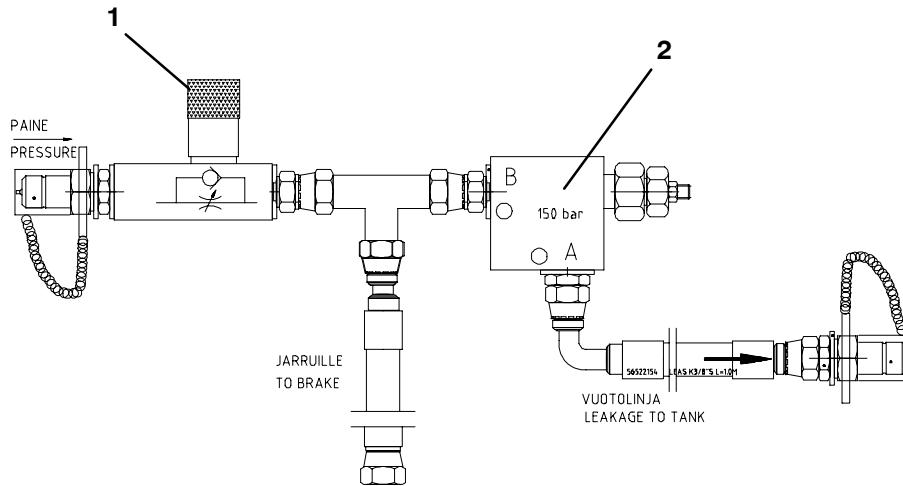


Fig. 3. Brake power regulator's controls

# VARIO 101

## 8.5. USE OF THE BRAKE POWER REGULATOR (HYDRAULIC) (OPTIONAL)

The brake power regulator is used to adjust the hydraulic pressure and hydraulic flow rate going to the brakes thus adjusting brake power. Flow rate which goes to the brakes is adjusted in the flow control valve (1). The pressure reduction valve (2) restricts the pressure going to the brakes to a maximum 150 bar value.



## 9. LUBRICANT RECOMMENDATIONS

When lubricating or servicing the trailer, turn off the vehicle. Never attempt to clean, lubricate or service the trailer while it is in motion.

Ensure regularity of lubrication by following the lubricating schedule.

Inspect equipment daily for signs of failures or beginning of failures.

Use proper tools for service.

Keep flammable materials away from heat, sparks and open fire.

### RECOMMENDED GREASES

| Company           | Type                                     |
|-------------------|--|
| BP                | Energrease LS-EP2, L21M                  |
| EXXON             | Beacon EP2, Multipurpose GR Moly         |
| MOBIL             | Mobilux EP2, Mobil Grease MP, Special    |
| SHELL             | Alvania EP Grease 2                      |
| UNION /<br>TEXACO | Marfak Multi-purpose 2, Molytex Grease 2 |
| TEBOIL            | Universal CLS                            |



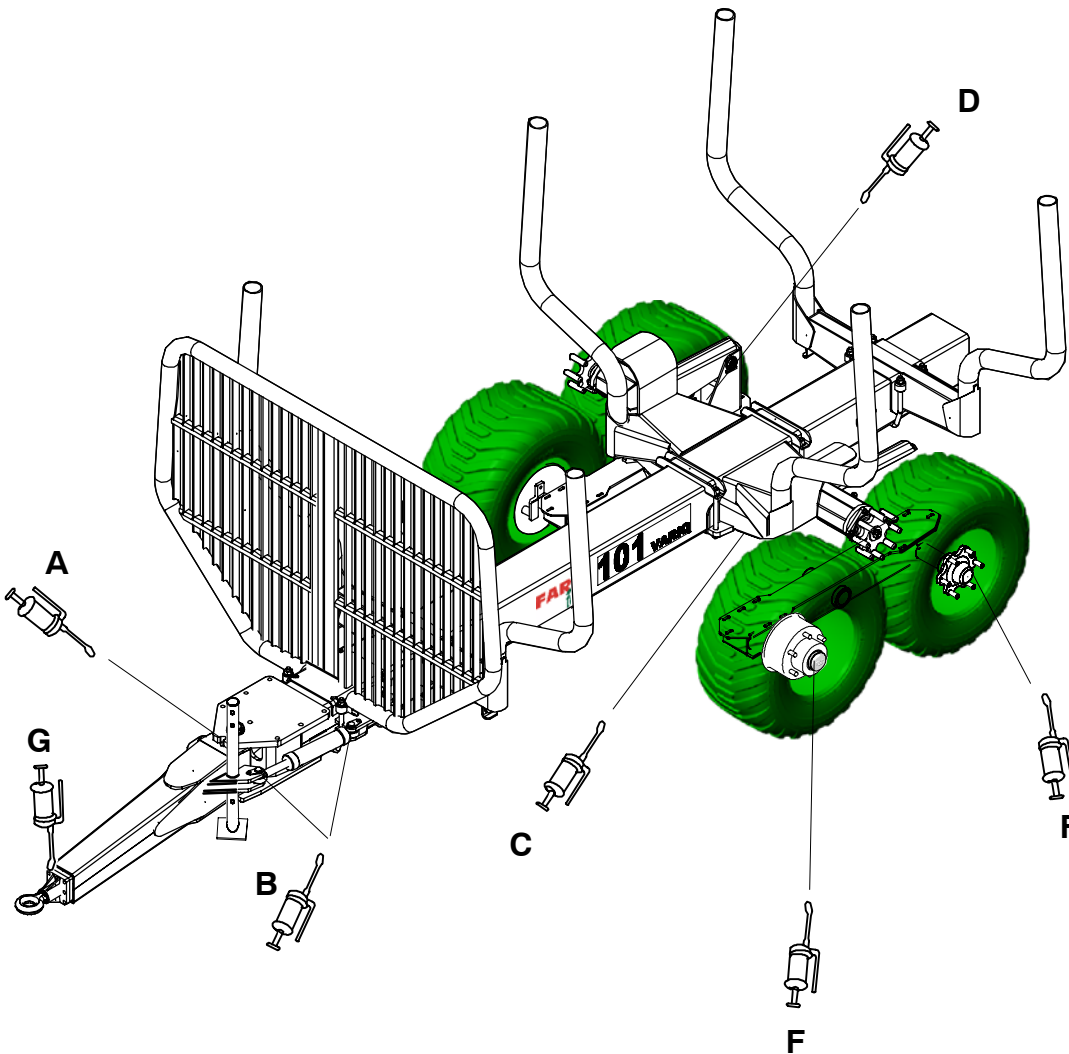
# VARIO 101

## 10. TROUBLE SHOOTING

| TROUBLE                                       | POSSIBLE CAUSE  | REMEDY  |
|---|---|---|
| 4WD DOES NOT FUNCTION                         | QUICK-CONNECTOR LOOSE OR DEFECTIVE                      | CHECK THE QUICK-CONNECTORS                                      |
|   | DIRECTION VALVE HAS NO CURRENT SUPPLY                   | CHECK SWITCHES AND FUSES  |
| PULLING ROLL TURNS BUT CANNOT BE LOWERED      | REGULATION OF THE REACTIVE NON-RETURN VALVE HAS CHANGED | ADJUST THE REACTIVE NON-RETURN VALVE                            |
|   | REMOVABLE NON-RETURN VALVE FAULTY                       | REPLACE REMOVABLE NON-RETURN VALVE                              |
|   | HOSE PIPE LOOSE   | CHECK HOSE PIPES AND THE CONNECTIONS                            |
| PULLING ROLL CAN BE LOWERED BUT DOES NOT TURN | REGULATION OF THE REACTIVE NON-RETURN VALVE HAS CHANGED | ADJUST THE REACTIVE NON-RETURN VALVE                            |
|   | QUICK-CONNECTOR LOOSE OR DEFECTIVE                      | CHECK THE QUICK-CONNECTORS                                      |
| 4 WD IS INEFFECTIVE                           | PRESSURE IS LOW   | CHECK THE PRESSURE; FIRST OF THE TRACTOR; THEN OF THE 4WD VALVE |
|   | HYDRAULIC MOTOR FAULTY                                  | REPLACE OR REPAIR THE MOTOR                                     |
|   | HOSE PIPE LINES ARE BLOCKED                             | CHECK THE HOSE PIPES  |
| BRAKES ARE INEFFECTIVE                        | PRESSURE ON THE BRAKE IS LOW                            | CHECK THE PRESSURE  |
|   | BRAKE SHOES OR BRAKE DRUMS ARE WORN OUT                 | REPLACE BRAKE SHOES OR BRAKE DRUMS                              |
|   | BRAKE CYLINDER DEFECTIVE                                | REPAIR OR REPLACE THE BRAKE CYLINDER                            |
|   | BRAKE PIPE DAMAGED / LEAKING                            | CHECK HOSE PIPES AND CONNECTORS                                 |
|   | SEALS OF THE BRAKE CYLINDER ARE DEFECTIVE               | REPLACE THE SEALS   |

# VARIO 101

## 11.LUBRICATION SCHEME



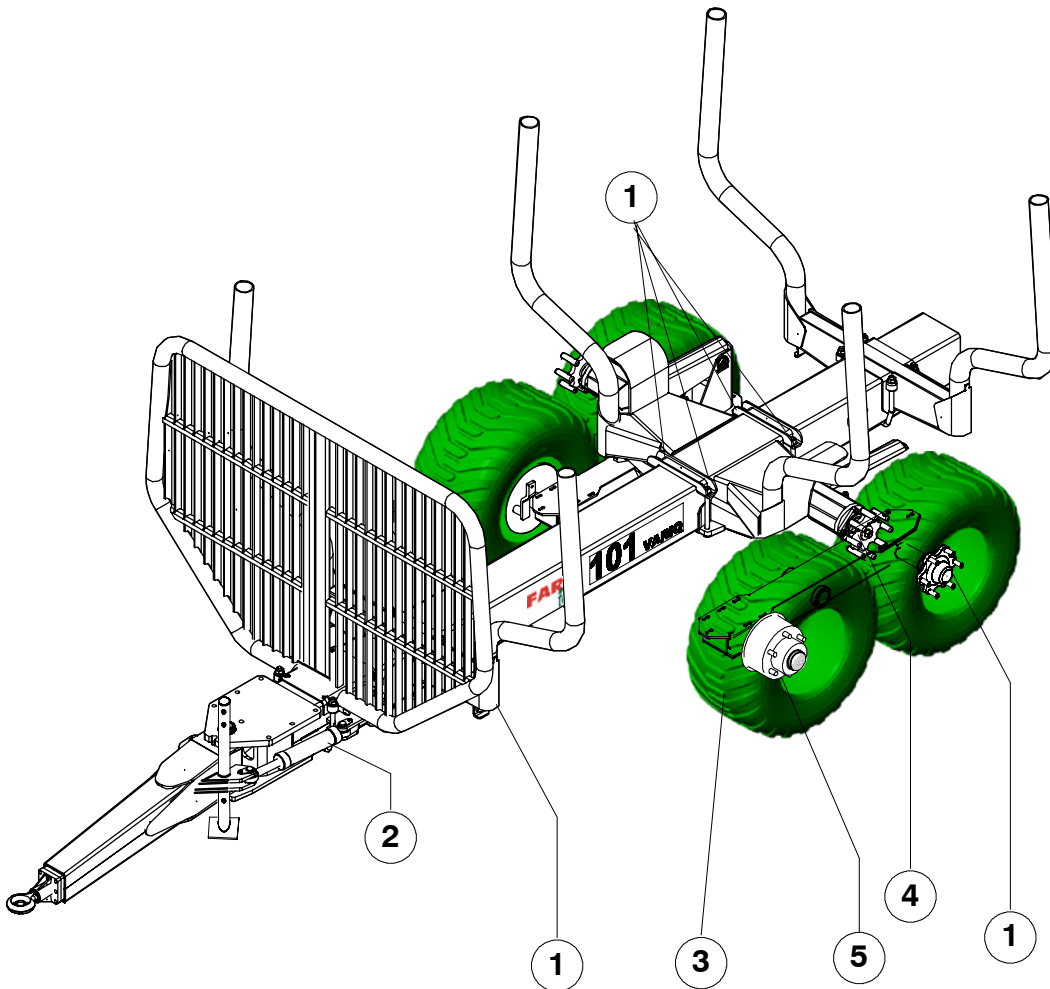
| LUBRICATING POINT                 | TYPE OF LUBRICANT | INTERVAL                         |
|-----------------------------------|-------------------|----------------------------------|
| A. Drawbeam joint                 | Grease            | 10 h or each shift               |
| B. Hydraulic steering cylinders   | Grease            | 10 h or each shift               |
| C. Bogie bearings                 | Grease            | 10 h or each shift               |
| D. Hydraulic motors and cylinders | Grease            | 10 h or each shift               |
| E. Bearings                       | Grease            | 10 h or each shift               |
| F. Hubs (*)                       | Grease            | 50 h at first use 200h otherwise |
| G. Eye bolt                       | Grease            | 50 h or weekly                   |

### (\*) GREASING THE HUBS

Open the grease removal fitting on the opposite side of the grease fitting and perform the greasing. Tighten the grease removal fitting after having discontinued the greasing.

# VARIO 101

## 12.MAINTENANCE SCHEME



### WEEKLY (50 hours)

1. Check the tightness of stays fixing and wheel bolts.  
**REMARK! For a new trailer, check after first 10 hours.**
2. Check hydraulic hoses and cylinders condition. Check connection of hoses. When you change hydraulic hoses, clean the new hoses with pressurized air. Make sure that the hoses are connected correctly after replacing.

### EVERY 100 HOURS

3. Check tyre pressure.

|                            |         |
|----------------------------|---------|
| 400/60-15,5 TT / ELS PR 14 | 4,8 bar |
| 500/50-17 TT PR 14         | 3,9 bar |
| 16/70-20 TT PR14           | 3,5 bar |
| 400/60-15,5 ELS PR14       | 4,8 bar |
| 500/55-17 ELS PR12         | 3,1 bar |
| 550/45-22,5 F328 PR16      | 2,8 bar |
| 500/60-22,5 F328 PR16      | 3,2 bar |
| 600/50-22,5 F328 PR16      | 2,6 bar |

### EVERY 6th MONTH (1000 hours)

4. Check hub bearings and bogie bearings.
5. Check brakes condition. Replace brake shoes if they have worn down to 2 mm or below ( see spare parts manual for exploded view of brakes). Clean brake drum.

---

# **VARIO 101**

---

---

## **13. VARIO 101 VARIATIONS**

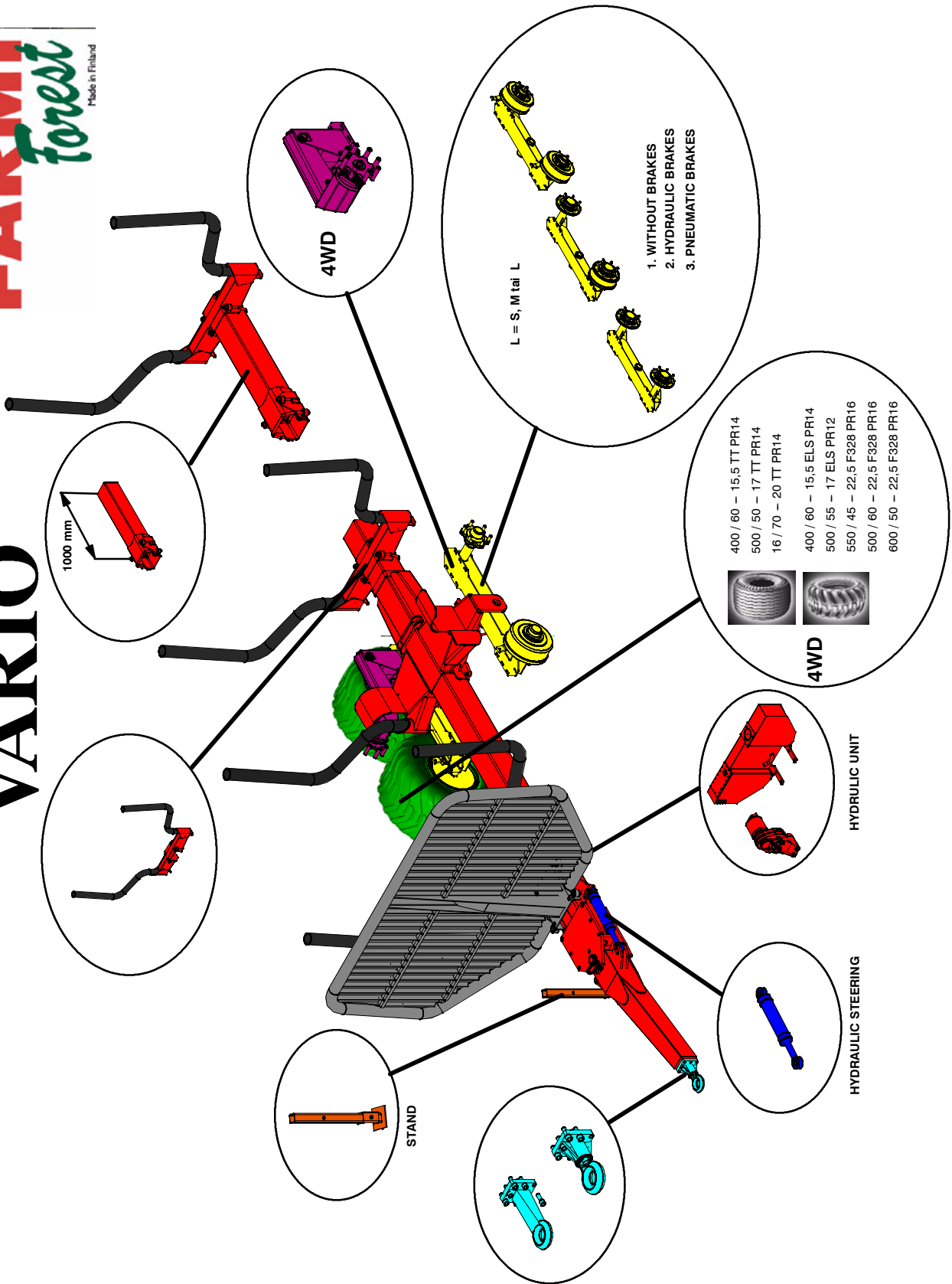
---

One of the best characteristic of the VARIO 101 is it's variation, which happens simply and easily by changing moduled parts. For instance, if you have purchased a forest trailer, which is a basic equipped unit and without brake and you wish to change your trailer to a 4WD with brakes as a professional tool, it will happen easily by ordering and changing / adding moduled parts to an already purchased forest trailer. At the next page there is a schema, where you'll find the needed modules when changing your trailer.

# VARIO 101

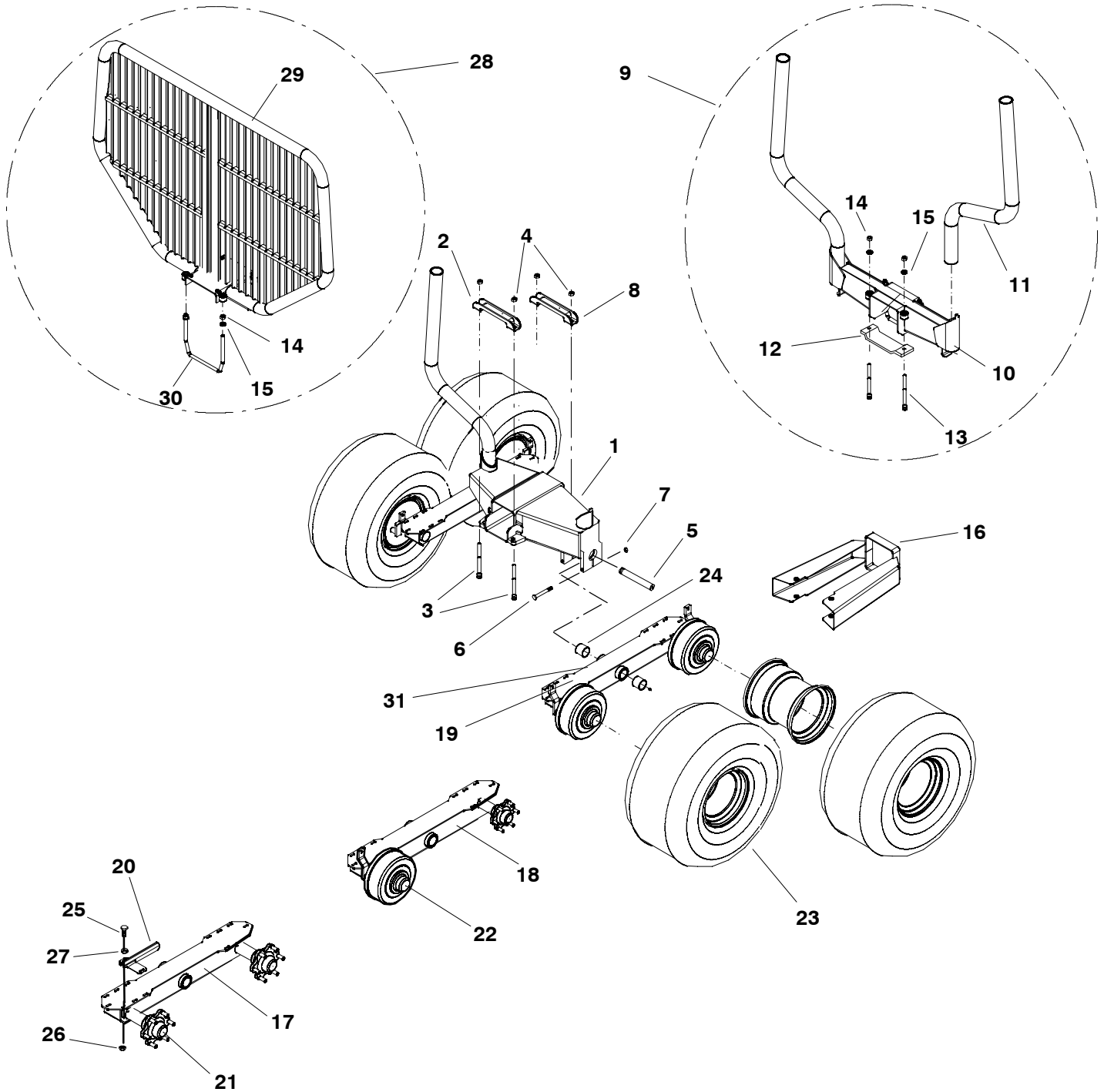
**FARM**  
*Forest*  
Made in Finland

# VARIO



# VARIO 101

## Frame – Rahmen – Châssis – Runko



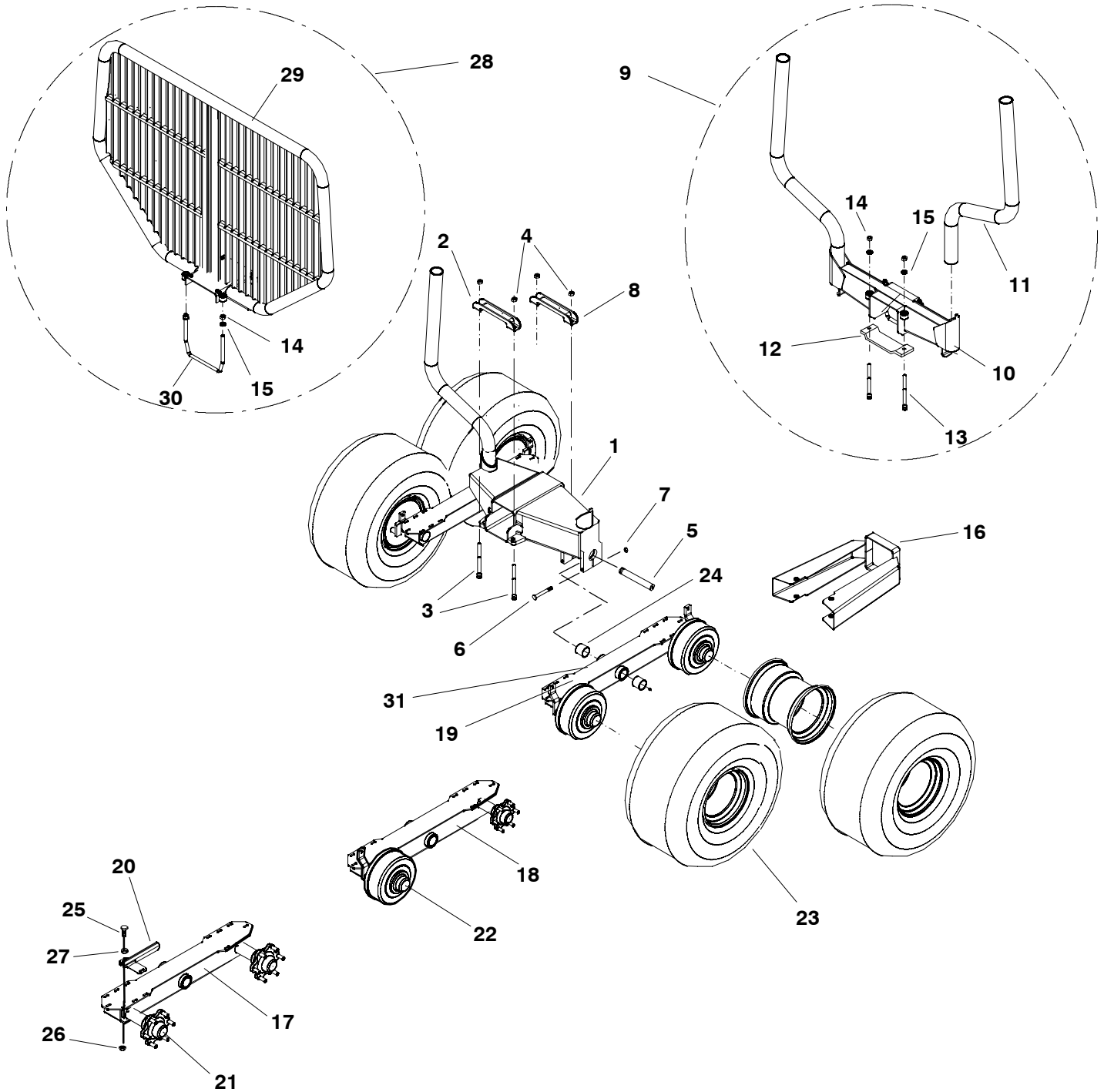
# VARIO 101

## Frame – Rahmen – Châssis – Runko

| Part  | Order No.    | Description   | Remarks                                   | Pc                        |
|-------|--------------|---|---|---------------------------|
| Teil  | Best Nr.     | Bezeichnung   | Obs                                       | St.                       |
| Pièce | No. de ordre | Désignation   | Obs                                       | Pc                        |
| Osa   | Tilausnumero | Osan nimi   | Huom.                                     | Kpl                       |
| 1.    | 44096340     | Bolster bogie<br>Banc de rancher  | Doppelachse<br>Telipankko                 | 1                         |
| 2.    | 44091160     | Fastening<br>Support  | Verschluss<br>Kiinnitin                   | 1                         |
| 3.    | 52091758     | Socked head screw<br>Vis hexagonale à tête creuse   | Innensechskantschraube<br>Kuusiokoloruuvi | M24x2x200 10.9ZN<br>4     |
| 4.    | 52117231     | Lock nut<br>Écrou à mâchoires   | Schlossmutter<br>Lukitusmutteri           | M24x2 DIN985 10.9 ZN<br>4 |
| 5.    | 44072310     | Pin<br>Broche de vérin  | Zapfen<br>Telin tappi                     | 2                         |
| 6.    | 52063393     | Screw<br>Vis  | Schraube<br>Kuusioruuvi                   | M16X1,5X120 8.8 ZN<br>4   |
| 7.    | 52110244     | Nut<br>Écrou  | Mutter<br>Mutteri                         | M16X1,5 DIN934 8.8ZN<br>4 |
| 8.    | 44092100     | Fastening<br>Support  | Verschluss<br>Kiinnitin                   | 1                         |
| 9.    | 44096310     | Bolster set, compl.<br>Les ranchers coulissants   | Rungenbank, kompl.<br>Irtopankko, koonta  | 1                         |
| 10.   | 44096400     | Bolster<br>Semelle  | Rungenhalter<br>Pankko                    | 1                         |
| 11.   | 44090570     | Stake<br>Montant  | Rungen<br>Karikka                         | 2                         |
| 12.   | 43300920     | Tightener<br>Dispositif de serrage  | Verschluss<br>Kiristin                    | 4                         |
| 13.   | 52062247     | Screw<br>Vis  | Schraube<br>Kuusioruuvi                   | M20X70 DIN931 8.8ZN<br>8  |
| 14.   | 52200086     | Washer<br>Rondelle  | Scheibe<br>Aluslevy                       | M20 DIN126 5.8ZN<br>8     |
| 15.   | 52117207     | Lock nut<br>Écrou à mâchoires   | Schlossmutter<br>Lukitusmutteri           | M20 DIN985 8.8ZN<br>8     |
| 16.   | 44091840     | Cover<br>Couvercle  | Schutz<br>Takasuojja                      | 1                         |
| 17.   |              | Bogie beam, without brakes<br>Pendelachse, ohne Bremse<br>Bogie, sans frein<br>Telipalkki, jarruton | S   | 1                         |
|       |              | Bogie beam, without brakes<br>Pendelachse, ohne Bremse<br>Bogie, sans frein<br>Telipalkki, jarruton | M   | 1                         |
|       |              | Bogie beam, without brakes<br>Pendelachse, ohne Bremse<br>Bogie, sans frein<br>Telipalkki, jarruton | L   | 1                         |

# VARIO 101

## Frame – Rahmen – Châssis – Runko





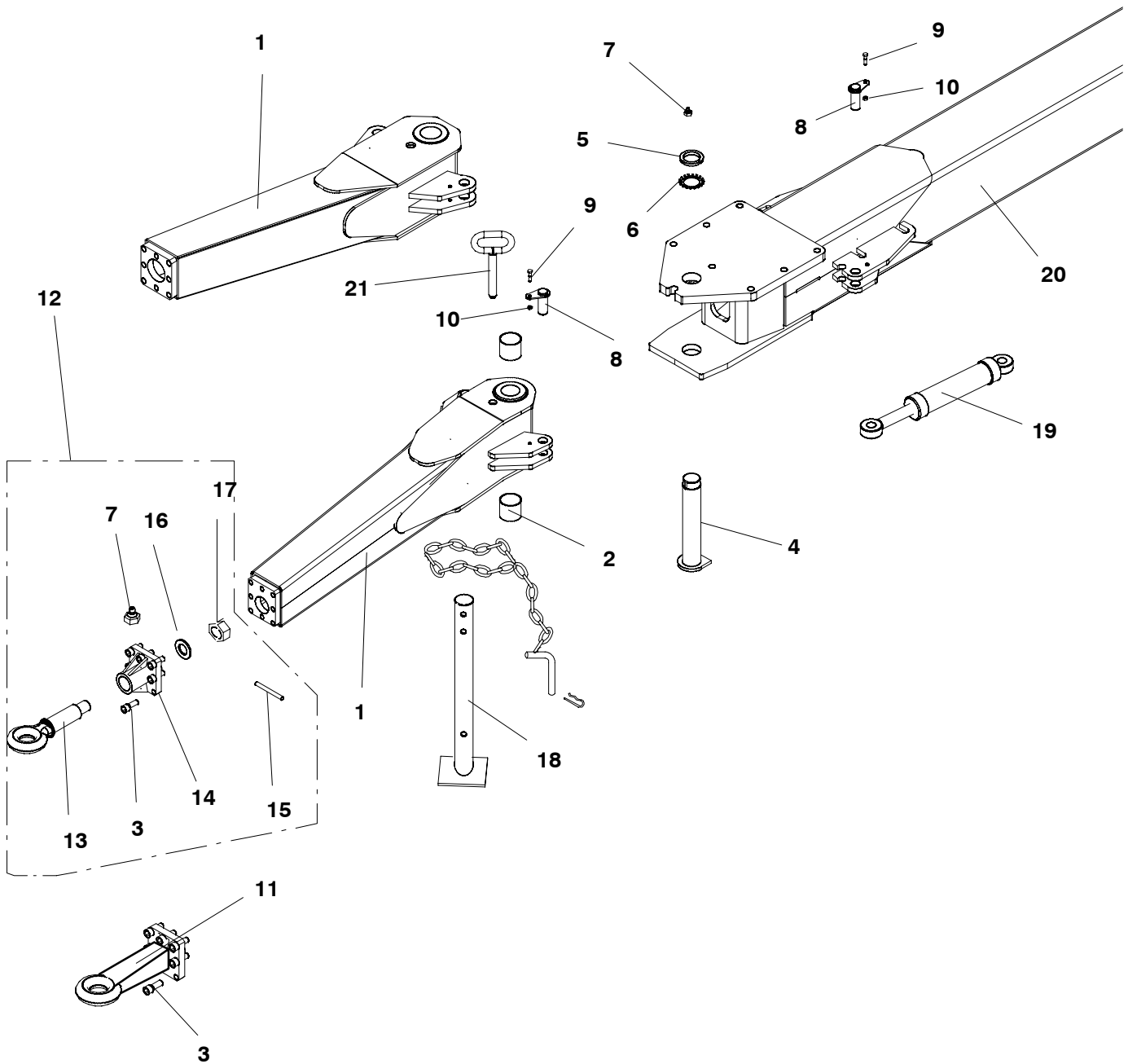
# VARIO 101

## Frame – Rahmen – Châssis – Runko

| Part  | Order No.    | Description   | Remarks                                 | Pc                       |
|-------|--------------|---|---|--------------------------|
| Teil  | Best Nr.     | Bezeichnung   | Obs                                     | St.                      |
| Pièce | No. de ordre | Désignation   | Obs                                     | Pc                       |
| Osa   | Tilausnumero | Osan nimi   | Huom.                                   | Kpl                      |
| 18.   | 04091260     | Bogie beam, one hub with brakes<br>Pendelachse, ein Nabe mit Bremse<br>Bogie, un moyeu avec frein<br>Telipalkki, jarrullinen napa yhdellä akselilla       | 915 mm                                  | 1                        |
|       |              | Bogie beam, one hub with brakes<br>Pendelachse, ein Nabe mit Bremse<br>Bogie, un moyeu avec frein<br>Telipalkki, jarrullinen napa yhdellä akselilla       | S                                       | 1                        |
|       |              | Bogie beam, one hub with brakes<br>Pendelachse, ein Nabe mit Bremse<br>Bogie, un moyeu avec frein<br>Telipalkki, jarrullinen napa yhdellä akselilla       | M                                       | 1                        |
|       |              | Bogie beam, one hub with brakes<br>Pendelachse, ein Nabe mit Bremse<br>Bogie, un moyeu avec frein<br>Telipalkki, jarrullinen napa yhdellä akselilla       | L                                       | 1                        |
| 19.   |              | Bogie beam, two hubs with brakes<br>Pendelachse, zwei Nabe mit Bremse<br>Bogie, deux moyeux avec frein<br>Telipalkki, jarrullinen napa kahdella akselilla | M                                       | 1                        |
|       |              | Bogie beam, two hubs with brakes<br>Pendelachse, zwei Nabe mit Bremse<br>Bogie, deux moyeux avec frein<br>Telipalkki, jarrullinen napa kahdella akselilla | L                                       | 1                        |
| 20.   | 44091800     | Hose cover, right<br>Protection de tuyau, droit   | Schutz, recht                           | 1                        |
|       | 44091810     | Hose cover, left<br>Protection de tuyau, gauche   | Schutz, link<br>Jarruletkunsuoja, vasen | 1                        |
| 21.   |              | Hub without brakes<br>Moyeu sans frein  | Nabe ohne Bremse<br>Napa, jarruton      | 6-bolts / 8-bolts<br>1   |
| 22.   |              | Hub with brakes<br>Moyeu avec frein   | Nabe mit Bremse<br>Napa, jarrullinen    | 6-bolts / 8-bolts<br>1   |
| 23.   |              | Tyre<br>Pneus   | Reifen<br>Rengas                        | 4<br>4                   |
| 24.   | 54562590     | Slide bearing<br>Palier à glissement  | Gleitlager<br>Liukulaakeri              | 4<br>4                   |
| 25.   | 52060233     | Screw<br>Vis  | Schraube<br>Ruuvi                       | M10X30 DIN933 8.8ZN<br>4 |
| 26.   | 52117108     | Lock nut<br>Écrou à mâchoires   | Schlossmutter<br>Lukitusmutteri         | M10 DIN985 8.8ZN<br>4    |
| 27.   | 52200045     | Washer<br>Rondelle  | Scheibe<br>Aluslevy                     | M10 DIN126 5.8ZN<br>4    |
| 28.   | 44093800     | Screen, compl.<br>Grille, compl.  | Schutzgitter, kompl.<br>Sermi, koonta   | 1<br>1                   |
| 29.   | 44093660     | Screen<br>Grille  | Schutzgitter<br>Sermi                   | 1<br>1                   |
| 30.   | 44095100     | U-bolt<br>Boulon U  | Bügel<br>Sinkilä                        | 1<br>1                   |
| 31.   | 52401015     | Grease nipple<br>Graisseur  | Schmiernippel<br>Rasvanippa             | AR1/8"<br>2              |

# VARIO 101

Draw bar + beam – Deichsel + Rahmen – Timon de traction + membrure – Vetoaisa + runko



# VARIO 101

## Draw bar + beam – Deichsel + Rahmen – Timon de traction + membrure – Vetoaisa + runko

| Part  | Order No.    | Description  | Remarks                                   | Pc                    |
|-------|--------------|--|---|-----------------------|
| Teil  | Best Nr.     | Bezeichnung  | Obs                                       | St.                   |
| Pièce | No. de ordre | Désignation  | Obs                                       | Pc                    |
| Osa   | Tilausnumero | Osan nimi  | Huom.                                     | Kpl                   |
| 1.    | 44095710     | Draw bar<br>Tige de traction                       | Deichsel<br>Vetoaisa                      | 1                     |
| 2.    | 54562590     | Slide bearing<br>Palier á glissement               | Gleitlager<br>Liukulaakeri                | 2                     |
| 3.    | 56094576     | Socked head screw<br>Vis hexagonale á tête creuse  | Innensechskantschraube<br>Kuusiokoloruuvi | 8                     |
| 4.    | 44095690     | Pin<br>Broche                                      | Zapfen<br>Tappi                           | 1                     |
| 5.    | 52118122     | Axle nut<br>Garniture d'étanchéité                 | Mutter<br>Akselimutteri                   | 1                     |
| 6.    | 52221124     | Plate<br>Plat                                      | Platte<br>Varmistuslaatta                 | 1                     |
| 7.    | 52401015     | Grease nipple<br>Graisseur                         | Schmiernippel<br>Rasvanippa               | AR 1/8" 2             |
| 8.    | 44090640     | Pin<br>Broche                                      | Zapfen<br>Tappi                           | 4                     |
| 9.    | 52060233     | Screw<br>Vis                                       | Schraube<br>Kuusioruuvi                   | M10X30 DIN933 8.8ZN 4 |
| 10.   | 52117108     | Lock nut<br>Écrou á mâchoires                      | Schlossmutter<br>Lukitusmutteri           | M10 DIN985 8.8ZN 4    |
| 11.   | 44091710     | Draw bar eye, fixed<br>Boulon á oeillet, rigide    | Zugöse, fix<br>Vetosilmä, kiinteä         | 1                     |
| 12.   | 04073530     | Draw bar eye, turning<br>Boulon á oeillet, rotatif | Zugöse, rotierend<br>Vetosilmä, pyörivä   | 1                     |
| 13.   | 44090810     | Eye bolt<br>Boulon á oeillet                       | Zugöse<br>Vetosilmukka                    | 1                     |
| 14.   | 44090770     | Mounting flange<br>Bride de montage                | Einbaurahmen<br>Kiinnityslaippa           | 1                     |
| 15.   | 52813193     | Split pin<br>Goupille fendue                       | Scherensplint<br>Saksisokka               | 6x60 DIN94 ZN 1       |
| 16.   | 44073240     | Washer<br>Rondelle                                 | Scheibe<br>Aluslevy                       | 1                     |
| 17.   | 52115250     | Castle nut<br>Écrou crénelé                        | Kronenmutter<br>Kruunumutteri             | M36x1,5 DIN937 1      |
| 18.   | 04092480     | Support leg<br>Pied stabilisateur                  | Stützbeine<br>Tukijalka                   | 1                     |
| 19.   | 56044803     | Hydraulic cylinder<br>Cylindre hydraulique         | Hydraulik Zylinder<br>Hydraulisylinteri   | 63/36–230 2           |
| 20.   | 44090850     | Frame<br>Châssis                                   | Rahmen<br>Runkoputki                      | 1                     |
| 21.   |              | Pin<br>Broche                                      | Zapfen<br>Lukitustappi                    | 1                     |

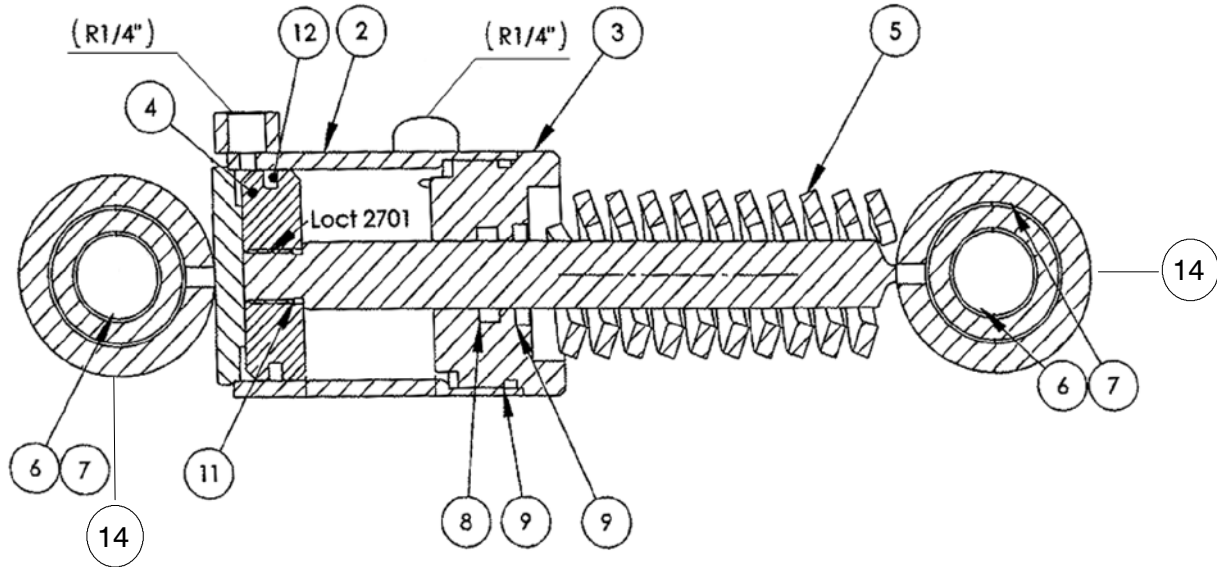


# VARIO 101

| Part<br>Teil<br>Pièce<br>Osa | Order No.<br>Best Nr.<br>No. de ordre<br>Tilausnumero | Description<br>Désignation            | Bezeichnung<br>Osan nimi           | Remarks<br>Obs<br>Obs<br>Huom. | Pc<br>St.<br>Pc<br>Kpl |
|------------------------------|---|---------------------------------------|------------------------------------|--------------------------------|------------------------|
| 1.                           | 44095910  | Arm, right<br>Bras, droite            | Schaft, rechts<br>Varsi, oikea     |                                | 1                      |
|                              | 44096080  | Arm, left<br>Bras, gauche             | Schaft, links<br>Varsi, vasen      |                                | 1                      |
| 2.                           | 44095860  | Frame<br>Cadre                        | Rahmen<br>Runko                    |                                | 1                      |
| 3.                           | 56097320  | Cylinder<br>Cylindre                  | Zylinder<br>Sylinteri              |                                | 1                      |
| 4.                           | 44096040  | Pin<br>Broche                         | Zapfen<br>Tappi                    | D25                            | 1                      |
| 5.                           | 44096020  | Pin<br>Broche                         | Zapfen<br>Tappi                    | D25/D30                        | 1                      |
| 6.                           | 44095360  | Pin<br>Broche                         | Zapfen<br>Tappi                    |                                | 1                      |
| 7.                           | 56028850  | Hydraulic motor<br>Moteur hydraulique | Hydraulik Motor<br>Hydraulimootori |                                | 1                      |
| 7.1.                         | 58219411  | Key<br>Coin                           | Keil<br>Kiila                      |                                | 1                      |
| 7.2.                         | 58219759  | Seal kit<br>Série isolation           | Dichtungssatz<br>Tiivistesarja     |                                | 1                      |
| 8.                           | 52062023  | Screw<br>Vis                          | Schraube<br>Ruuvi                  | M12x30 DIN933 88ZN             | 4                      |
| 9.                           | 52060175  | Screw<br>Vis                          | Schraube<br>Ruuvi                  | M8x25 DIN933 88ZN              | 1                      |
| 10.                          | 52062031  | Screw<br>Vis                          | Schraube<br>Ruuvi                  | M12X40 DIN933 8.8ZN            | 7                      |
| 11.                          | 52117124  | Lock nut<br>Écrou à mâchoires         | Schlossmutter<br>Lukitusmutteri    | M12 DIN985 8.8ZN               | 7                      |
| 12.                          | 52200052  | Washer<br>Rondelle                    | Scheibe<br>Aluslevy                | M12 DIN125 5.8ZN               | 14                     |
| 13.                          | 52117108  | Lock nut<br>Écrou à mâchoires         | Schlossmutter<br>Lukitusmutteri    | M10 DIN985 88ZN                | 1                      |
| 14.                          | 44073240  | Washer<br>Rondelle                    | Scheibe<br>Aluslevy                |                                | 1                      |
| 15.                          | 54562509  | Glide bearing<br>Palier à glissement  | Gleitlager<br>Liukulaakeri         |                                | 2                      |
| 16.                          | 52813151  | Cotter<br>Fric                        | Splint<br>Saksisokka               | 5x50 DIN94                     | 1                      |
| 17.                          | -   | Castle nut<br>Écrou grénelé           | Kronenmutter<br>Kruunumutteri      | M36x1,5 DIN937                 | 1                      |
| 18.                          | 52401122  | Grease nipple<br>Graisseur            | Schmiernippel<br>Rasvanippa        | AR1/8                          | 1                      |
| 19.                          |   | Pulling roll<br>Tambour de traction   | Antriebrolle<br>Vetorulla          | 400/60-15,5 ELS PR14           | 1                      |
|                              | 44093050  | Pulling roll<br>Tambour de traction   | Antriebrolle<br>Vetorulla          | 500/55-17 ELS PR12             | 1                      |
|                              |   | Pulling roll<br>Tambour de traction   | Antriebrolle<br>Vetorulla          | 550/45-22,5 F328 PR16          | 1                      |
|                              |   | Pulling roll<br>Tambour de traction   | Antriebrolle<br>Vetorulla          | 500/60-22,5 F328, PR16         | 1                      |
|                              |   | Pulling roll<br>Tambour de traction   | Antriebrolle<br>Vetorulla          | 600/50-22,5 F328, PR16         | 1                      |
| 20.                          | 52115235  | Nut<br>Écrou                          | Mutter<br>Mutteri                  | M20x1,5                        | 1                      |
| 21.                          | 52200086  | Washer<br>Rondelle                    | Scheibe<br>Aluslevy                | M20                            | 1                      |
| 22.                          | 52813193  | Cotter<br>Fric                        | Splint<br>Sokka                    | 6x60 DIN94                     | 1                      |
| 23.                          | 52813086  | Cotter<br>Fric                        | Splint<br>Sokka                    | 4X40 DIN94 ZN                  | 1                      |

# VARIO 101

## Vetolaitteen hydraulisylinteri Ø63/20–40, Koonta



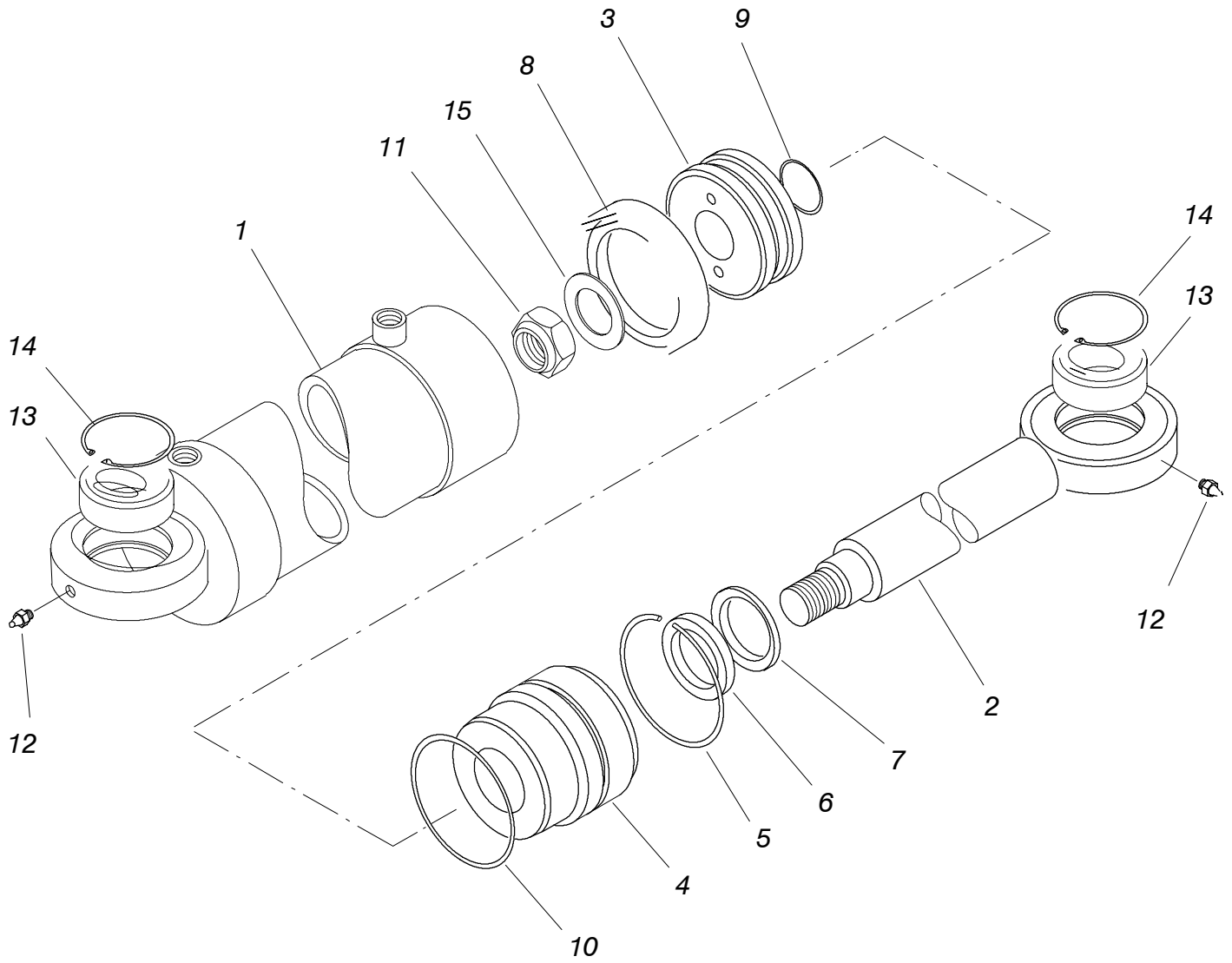
| Part<br>Teil<br>Pièce<br>Osa | Order No.<br>Best Nr.<br>No. de ordre<br>Tilausnumero | Description<br>Désignation                 | Bezeichnung<br>Osan nimi                | Remarks<br>Obs<br>Obs<br>Huom. | Pc<br>St.<br>Pc<br>Kpl |
|------------------------------|---|--|---|--------------------------------|------------------------|
|                              | 56097320  | Hydraulic cylinder<br>Cylindre hydraulique | Hydraulik Zylinder<br>Hydraulisylinteri | Ø63/20–40                      |                        |
| 1.                           | 58222100  | Piston rod<br>Tige de piston               | Kolbenstange<br>Männänvarsi             |                                | 1                      |
| 2.                           | 58222110  | Cylinder tube<br>Tube du vérin             | Zylinderrohr<br>Sylinteriputki          |                                | 1                      |
| 3.                           | 58222120  | Guide<br>Guide                             | Führung<br>Ohjain                       |                                | 1                      |
| 4.                           | 58222130  | Piston<br>Piston                           | Kolben<br>Mäntä                         |                                | 1                      |
| 5.                           | 58217894  | Spring<br>Ressort                          | Feder<br>Työkälujousi                   |                                | 1                      |
| 6.                           | 54591052  | Bearing<br>Palier                          | Lager<br>Nivellaakeri                   |                                | 2                      |
| 7.                           |   | Seal<br>Joint                              | Dichtung<br>Varrentiiviste              |                                | 1                      |
| 8.                           |   | Seal ring<br>Anneau d'étanchéité           | Dichtung<br>Luovutin                    |                                | 1                      |
| 9.                           |   | O-ring<br>Joint torique                    | O-ring<br>O-rengas                      |                                | 1                      |
| 10.                          |   | O-ring<br>Joint torique                    | O-ring<br>O-rengas                      |                                | 1                      |
| 11.                          |   | Piston seal<br>Joint de piston             | Kolbendichtung<br>Männäntiiviste        |                                | 1                      |
| 12.                          | 52231073  | Circlip<br>Circlips                        | Sicherungring<br>Reikävarmistin         | 42 DIN472                      | 2                      |
| 13.                          | 58218272  | Seal kit<br>Serie de joints                | Dichtungssatz<br>Tiivistesarja          | incl. parts: 7 – 11            | 1                      |
| 14.                          | 52401023  | Grease nipple<br>Graisseur                 | Schmiernippel<br>Rasvanippa             | AM6                            | 2                      |



A series of horizontal dashed lines for handwriting practice, arranged in 20 rows across the page.

# VARIO 101

56044803 . Ø63/36-230 Hydraulic cylinder – Hydraulik zylinder  
Cylindre hydraulique – Hydraulisylinteri



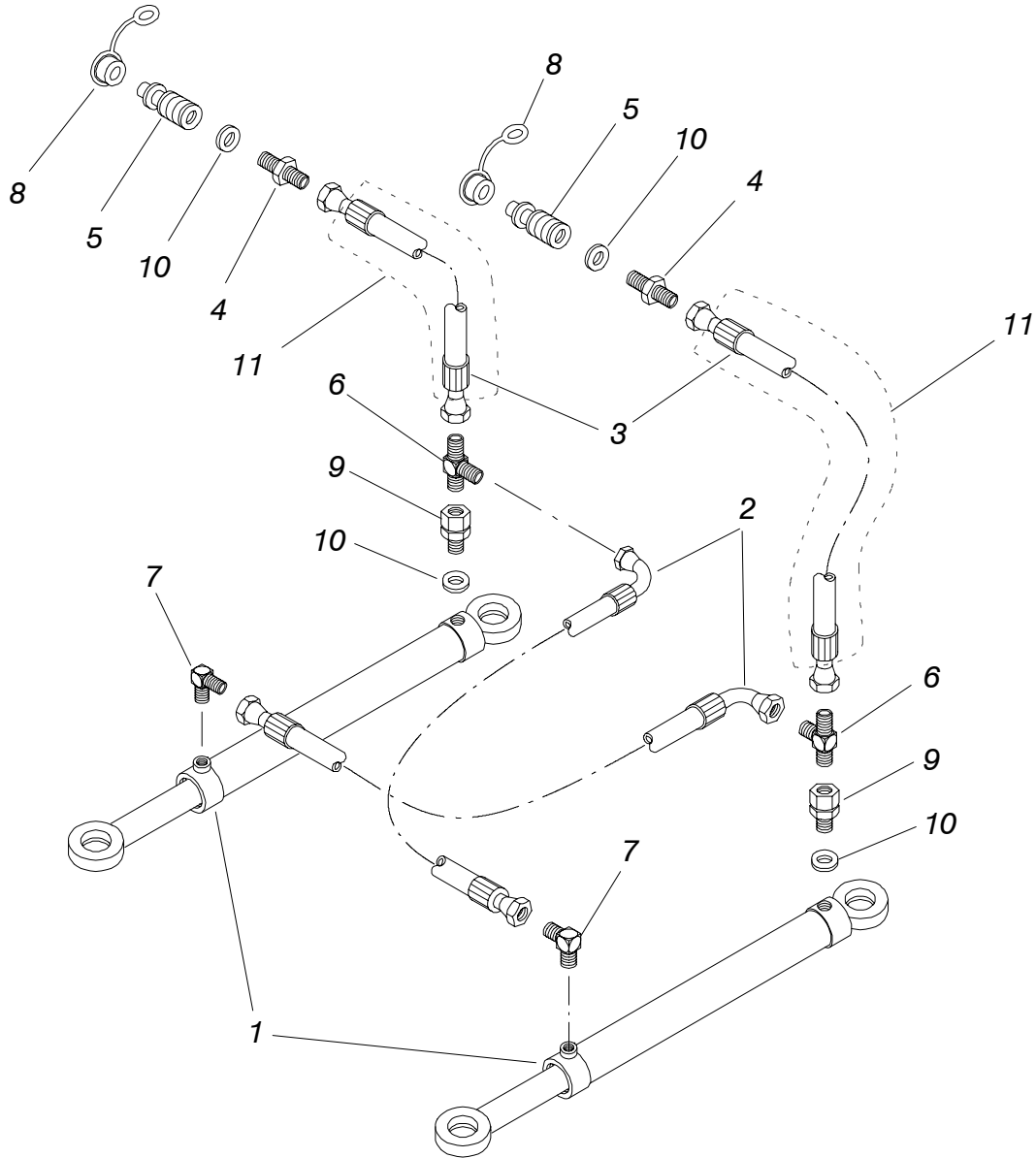


# VARIO 101

| Part<br>Teil<br>Pièce<br>Osa | Order No.<br>Best Nr.<br>No. de ordre<br>Tilausnumero | Description<br>Désignation                 | Bezeichnung<br>Osan nimi               | Remarks<br>Obs<br>Obs<br>Huom. | Pc<br>St.<br>Pc<br>Kpl |
|------------------------------|---|--|--|--------------------------------|------------------------|
|                              | 56044803  | Hydraulic cylinder<br>Cylindre hydraulique | Hydraulikzylinder<br>Hydraulisylinteri | ø63/36-230                     |                        |
| 1.                           | 33300971  | Cylinder tube<br>Tuyau de cylindre         | Zylinderrohr<br>Sylinteriputki         |                                | 1                      |
| 2.                           | 43300946  | Piston rod<br>Tige de piston               | Kolbenstange<br>Männänvarsi            |                                | 1                      |
| 3.                           | 42842799  | Piston<br>Piston                           | Kolben<br>Mäntä                        |                                | 1                      |
| 4.                           | 33091208  | Guide<br>Guide                             | Führung<br>Ohjain                      |                                | 1                      |
| 5.                           | 42842815  | Lock ring<br>Verrouillage                  | Schlossring<br>Lukkorengas             |                                | 1                      |
| 6.                           |   | Seal ring<br>Joint                         | Dichtungsring<br>Tiivisterengas        |                                | 1                      |
| 7.                           |   | Seal ring<br>Joint                         | Dichtungsring<br>Tiivisterengas        |                                | 1                      |
| 8.                           |   | Piston seal<br>Joint de piston             | Kolbendichtung<br>Männäntiiviste       |                                | 1                      |
| 9.                           |   | O-ring<br>O-bague                          | O-Ring<br>O-rengas                     |                                | 1                      |
| 10.                          |   | O-ring<br>O-bague                          | O-Ring<br>O-rengas                     |                                | 1                      |
| 11.                          | 52111085  | Nut<br>Écrou                               | Mutter<br>Mutteri                      | M20x2 DIN936 8.8ZN             | 1                      |
| 12.                          | 52401015  | Grease nipple<br>Graisseur                 | Schmiernippel<br>Rasvanippa            | AR1/8"                         | 2                      |
| 13.                          | 54591078  | Link bearing<br>Palier                     | Gelenklager<br>Pallonivellaakeri       |                                | 2                      |
| 14.                          | 52231099  | Circlip<br>Circlips                        | Sicherungsring<br>Reikävarmistin       | 47x1,75 DIN472                 | 2                      |
| 15.                          | 43222843  | Lock plate<br>Plaque de verrouillage       | Schlossscheibe<br>Lukituslevy          |                                | 1                      |
| 16.                          | 52356771  | Seal kit<br>Serie de joints                | Dichtungssatz<br>Tiivistesarja         | incl. parts: 6 - 10            | 1                      |

# VARIO 101

03300936 . Hydraulic steering, compl. – Hydraulische steuerung, komplet  
Direction hydraulique, compl. – Hydraulinen aisaohjaus, koonta



# VARIO 101

| Part<br>Teil<br>Pièce<br>Osa | Order No.<br>Best Nr.<br>No. de ordre<br>Tilausnumero | Description<br>Désignation                  | Bezeichnung<br>Osan nimi                        | Remarks<br>Obs<br>Obs<br>Huom. | Pc<br>St.<br>Pc<br>Kpl |
|------------------------------|---|---|---|--------------------------------|------------------------|
|                              | 03300936  | Hydraulic steering<br>Direction hydraulique | Hydraulische steuerung<br>Hydraulinen aisaohjus | HAO                            |                        |
| 1.                           | 56044803  | Hydraulic cylinder<br>Cylindre hydraulique  | Hydraulikzylinder<br>Hydraulisylinteri          | ø63/36-230                     | 2                      |
| 2.                           | 56522097  | Hose assembly<br>Ensemble de tuyaux         | Schlauchsatz<br>Letkuasetelma                   | K3/8" S L=0,7 m                | 2                      |
| 3.                           | 56520307  | Hose assembly<br>Ensemble de tuyaux         | Schlauchsatz<br>Letkuasetelma                   | S3/8" S L=2,5m                 | 2                      |
| 4.                           | 52432010  | Double fitting<br>Double embout             | Doppelnippel<br>Kaksoisnipa                     | R3/8"-1/2"                     | 2                      |
| 5.                           | 52449022  | Quick fitting<br>Accouplement rapide        | Schnappkupplung<br>Pikaliitinnippa              | R1/2"                          | 2                      |
| 6.                           | 52443678  | T-fitting<br>Raccord T                      | T-Nippel<br>T-nippa                             | R3/8"                          | 2                      |
| 7.                           | 52442357  | Angle fitting<br>Raccord d'angle            | Winkelnippel<br>Kulmanippa                      | RK3/8"-R3/8" 90°               | 2                      |
| 8.                           | 54922141  | Cap<br>Capuchon                             | Schutzstopfen<br>Suojahattu                     |                                | 2                      |
| 9.                           | 52435765  | Connecting fitting<br>Raccord de connexion  | Verbindungsrippel<br>Yhdysnipa                  | R3/8"                          | 2                      |
| 10.                          | 52390556  | Seal ring<br>Anneau d'étanchéité            | USIT-ring<br>Tiivisterengas                     | 17,4x24,0x1,5                  | 2                      |
| 11.                          | 54921473  | Hose protection<br>Protection de flexible   | Schlauchschutz<br>Letkusuoja                    | 7,5 m                          | 2                      |



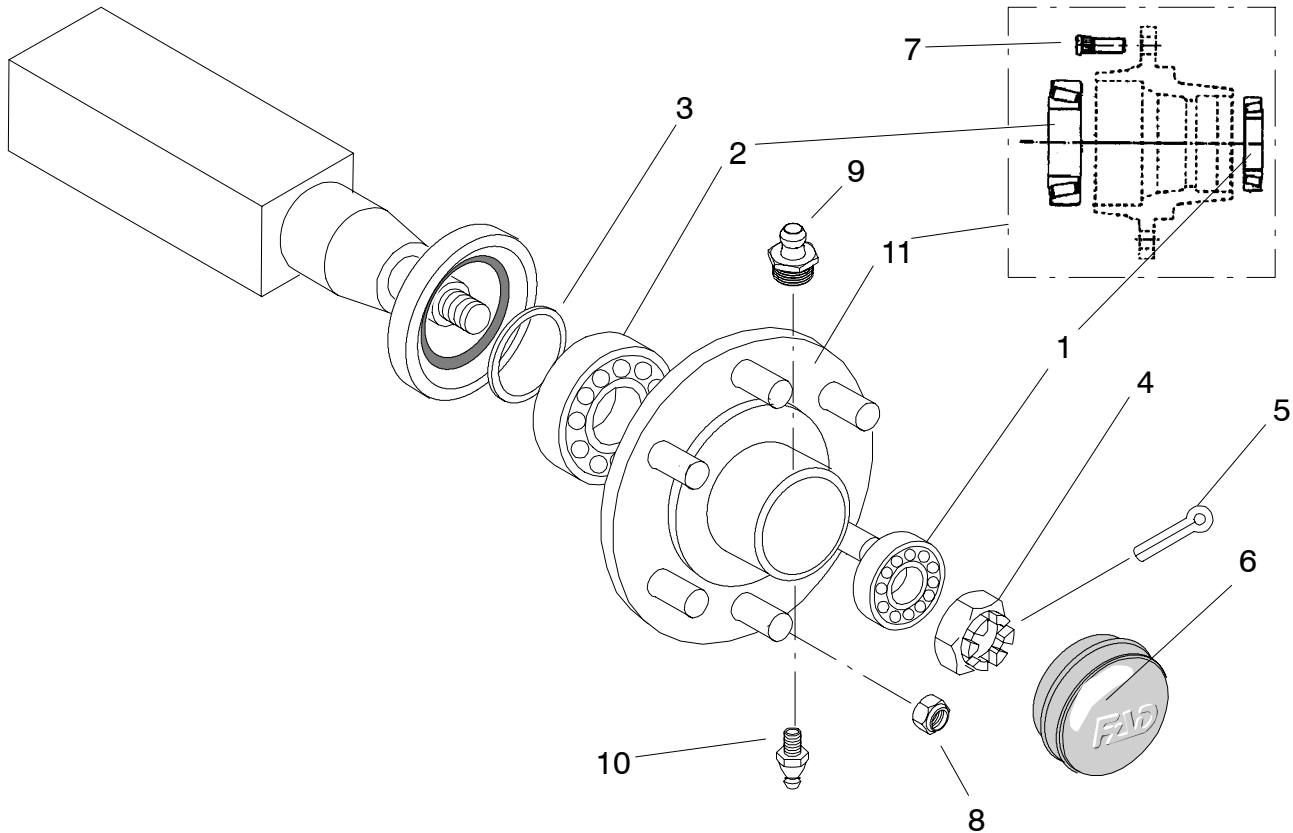
# VARIO 101

## VARIO 4WD HYDRAULICS – HYDRAULIK – HYDRAULIQUE – HYDRAULIIKKA

| Part<br>Teil<br>Pièce<br>Osa | Order No.<br>Best Nr.<br>No. de ordre<br>Tilausnumero | Description<br>Description<br>Désignation                          | Bezeichnung<br>Osan nimi                                 | Remarks<br>Obs<br>Obs<br>Huom. | Pc<br>St.<br>Pc<br>Kpl |
|------------------------------|---|--|--|--------------------------------|------------------------|
| 1. ...                       | 56028850  | Hydraulic motor<br>Moteur hydraulique                              | Hydraulikmotor<br>Hydraulimoottori                       |                                | 2                      |
| 2. ....                      | 56097320  | Hydraulic cylinder<br>Cylindre hydraulique                         | Hydraulikzylinder<br>Hydraulisyylinteri                  |                                | 2                      |
| 3. ....                      | 56075294  | Counter valve<br>Contre-soupape                                    | Wechselgegenventil<br>Vaihtovastaventtiili               |                                | 1                      |
| 4. ....                      | 56013238  | Restrictor valve<br>Soupape du dispositif de restriction           | Verstellbar Rückschlagventil<br>Vastusvastaventtiili     |                                | 2                      |
| 5. ....                      | 52443314  | Breather valve<br>Respirateur                                      | Entlüfter<br>Huohotin                                    |                                | 2                      |
| 6. ....                      | 52432101  | Double fitting<br>Double embout                                    | Doppelnippel<br>Kaksoisnippa                             | R1/4"                          | 2                      |
| 7. ....                      | 52442761  | Angle nipple<br>Embout coudé                                       | Vinkelnippel<br>Kulmanippa                               | R1/4"                          | 2                      |
| 8. ....                      | 52391034  | Usit-ring<br>Bague usit  | Usit-Dichtung<br>Usit-rengas                             |                                | 3                      |
| 9. ....                      | 52390200  | Usit-ring<br>Bague usit  | Usit-Dichtung<br>Usit-rengas                             |                                | 10                     |
| 10. ...                      | 52432051  | Double fitting<br>Double embout                                    | Doppelnippel<br>Kaksoisnippa                             | R1/2"                          | 6                      |
| 11. ...                      | 52442365  | Angle nipple<br>Embout coudé                                       | Vinkelnippel<br>Kulmanippa                               | R1/2" – R1/2"                  | 2                      |
| 12. ...                      | 52080207  | Plug<br>Bouchon  | Stopfen<br>Tulppa  | R1/2"                          | 2                      |
| 13. ...                      | 52081130  | Plug<br>Bouchon  | Stopfen<br>Tulppa  | R1/4"                          | 1                      |
| 14. ...                      | 44092110  | Terminal block<br>Bloc de connexions                               | Kontaktblock<br>Kytkentälohko                            |                                | 1                      |
| 15. ...                      | 44092110  | Hose assy<br>Ensemble de tuyaux                                    | Schlauchsatz<br>Letkuasetelma                            | compl, incl. parts 16–17       | 1                      |
| 16. ....                     |   | Hose assy<br>Ensemble de tuyaux                                    | Schlauchsatz<br>Letkuasetelma                            |                                | 2                      |
| 17. ....                     |   | Hose assy<br>Ensemble de tuyaux                                    | Schlauchsatz<br>Letkuasetelma                            |                                | 4                      |
| 18. ...                      | 04092910  | Hose assy+quick coupling<br>Ensemble de tuyaux+accouplement rapide | Schlauchsatz+Schnellkupplung<br>Letkuasetelma+pikaliitin | S1/2" S L=7,0 m                | 2                      |

# VARIO 101

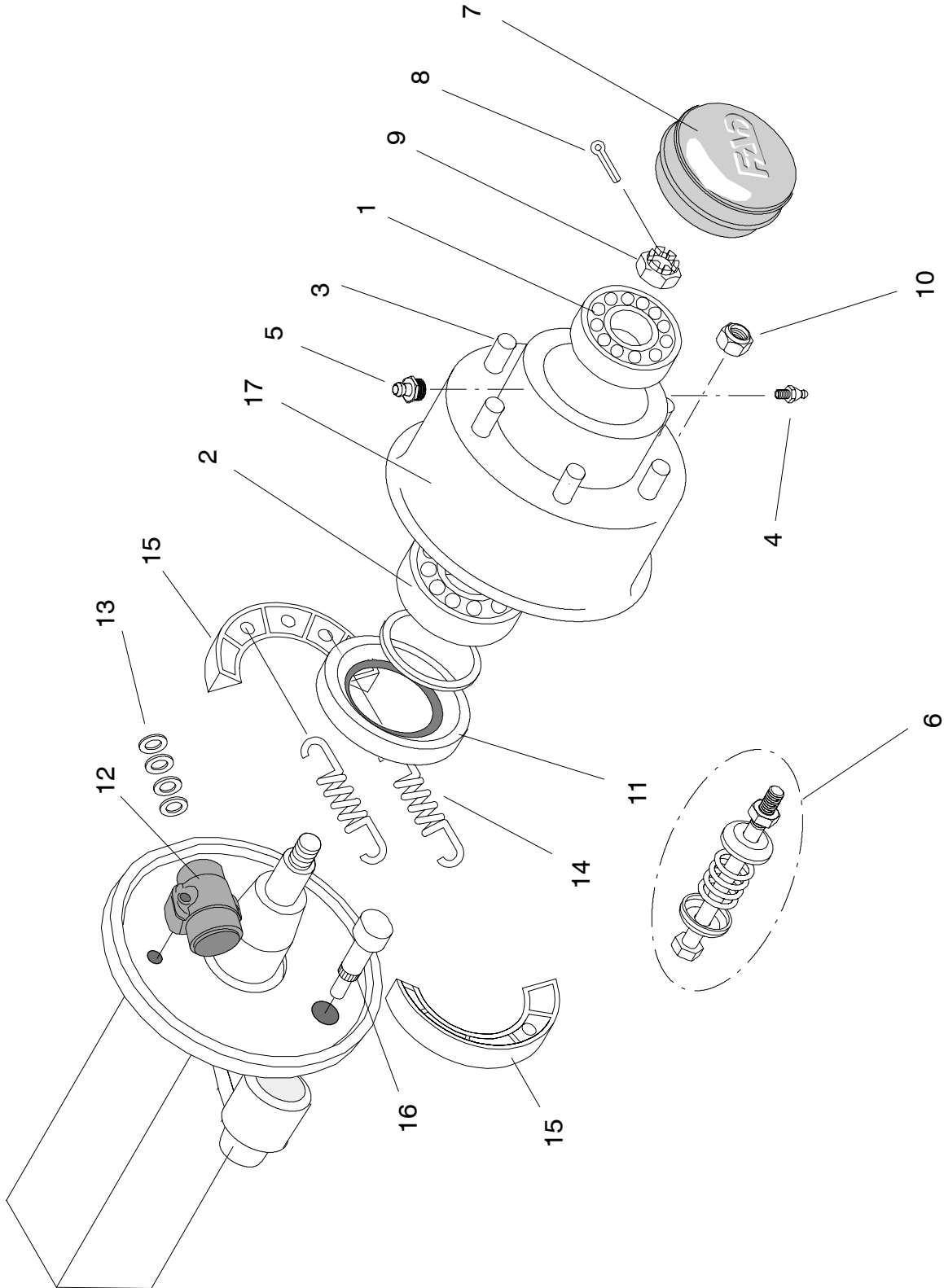
54839717 Hub, without brake, 6-bolts, compl. FL65-6, square axle  
 Nabe, ohne Bremse, 6-Bolzen, komplet. FL65-6, quadrat Achse  
 Moyeu, sans frein, 6 boulons, compl. FL65-6, axe de rectangle  
 Napa jarruton 6-pulttinen, Koonta FL65-6, neliöakseli



| Part<br>Teil<br>Pièce<br>Osa | Order No.<br>Best Nr.<br>No. de ordre<br>Tilausnumero | Description<br>Désignation   | Bezeichnung<br>Osan nimi  | Remarks<br>Obs<br>Obs<br>Huom. | Pc<br>St.<br>Pc<br>Kpl |
|------------------------------|---|--|---|--------------------------------|------------------------|
| 1. ...                       | 54522222  | Bearing<br>Palier  | Lager<br>Laakeri  |                                | 1                      |
| 2. ....                      | 58216581  | Bearing<br>Palier  | Lager<br>Laakeri  |                                | 1                      |
| 3. ....                      | 58221730  | Seal<br>Joint  | Dichtung<br>Tiiviste  |                                | 1                      |
| 4. ....                      | 58221720  | Castle nut<br>Erou crénéle   | Kronenmutter<br>Kruunumutteri   | M39X2                          | 1                      |
| 5. ....                      | 58220559  | Split pin<br>Goupille fendue   | Scherensplint<br>Saksisokka   |                                | 1                      |
| 6. ....                      | 58220534  | Dust cover<br>Couvercle pare-poussière                               | Schutzkappe<br>Pölysuoja  | ø90                            | 1                      |
| 7. ....                      | 58214584  | Bolt<br>Boulon   | Bolzen<br>Pultti  | M18X1,5X49                     | 6                      |
| 8. ....                      | 58214537  | Nut<br>Érou  | Mutter<br>Mutteri   | M18X1,5                        | 6                      |
| 9. ....                      | 58220658  | Grease nipple<br>Graisseur   | Schmiernippel<br>Rasvanippa   | M8                             | 1                      |
| 10. ...                      | 58218751  | Bleed screw<br>Vis de purge  | Entlüftungsnippel<br>Ilmausruuvi  | M8                             | 1                      |
| 11. ....                     |   | Housing, not sold separatly<br>Carter, n'est pas en vente séparément | Gehäuse wird nicht separat vergekauft<br>Laakeripesä, ei myydä erikseen |                                |                        |

# VARIO 101

54839725 Hub, with brake, 6-bolts, compl. square axle  
Nabe, mit Bremse, 6-Bolzen, komplet. quadrat Achse  
Moyeu, avec frein, 6 boulons, compl. axe de rectangle  
Jarrullinen napa 6-pulttinen, koonta, neliöakseli



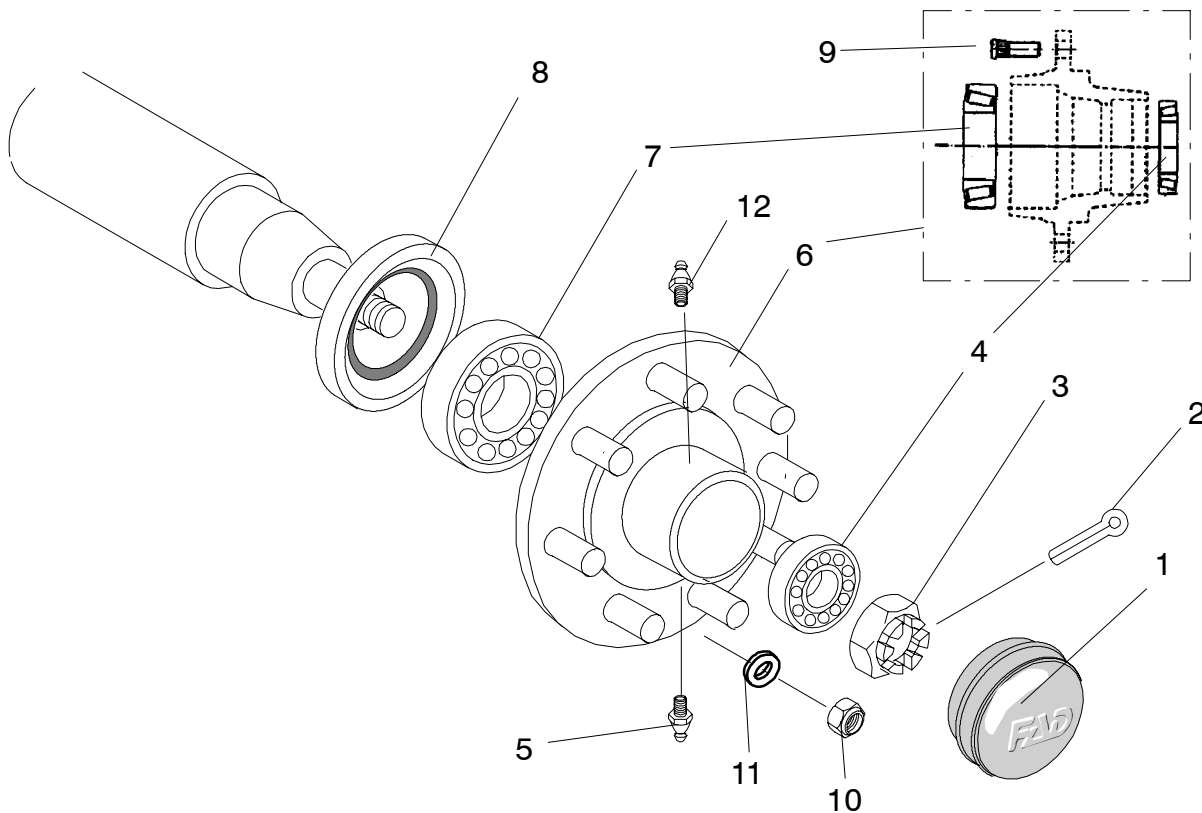
# VARIO 101

| Part<br>Teil<br>Pièce<br>Osa | Order No.<br>Best Nr.<br>No. de ordre<br>Tilausnumero | Description<br>Désignation             | Bezeichnung<br>Osan nimi        | Remarks<br>Obs<br>Obs<br>Huom. | Pc<br>St.<br>Pc<br>Kpl |
|------------------------------|---|--|---------------------------------|--------------------------------|------------------------|
| 1.                           | 54522222  | Bearing<br>Palier                      | Lager<br>Laakeri                |                                | 1                      |
| 2.                           | 58216581  | Bearing<br>Palier                      | Lager<br>Laakeri                |                                | 1                      |
| 3.                           | 58214594  | Bolt<br>Boulon                         | Bolzen<br>Pultti                | M18X1,5X62                     | 6                      |
| 4.                           | 58218751  | Bleed screw<br>Vis de purge            | Entlüftungsnippel<br>Ilmausruvi | M8                             | 1                      |
| 5.                           | 58220658  | Grease nipple<br>Graisseur             | Schmiernippel<br>Rasvanippa     | M8                             | 1                      |
| 6.                           | 58218991  | Spring holder<br>Support               | Verschluss<br>Kiinnityssarja    |                                | 1                      |
| 7.                           | 58220534  | Dust cover<br>Couvercle pare-poussière | Schutzkappe<br>Pölysuoja        | ø90                            | 1                      |
| 8.                           | 58220559  | Split pin<br>Goupille fendue           | Scherensplint<br>Saksisokka     |                                | 1                      |
| 9.                           | 58221720  | Castle nut<br>Écrou crénelé            | Kronenmutter<br>Kruunumutteri   | M39X2                          | 1                      |
| 10.                          | 58214537  | Nut<br>Écrou                           | Mutter<br>Mutteri               | M18X1,5                        | 6                      |
| 11.                          | 58221730  | Seal<br>Joint                          | Dichtung<br>Tiiviste            |                                | 1                      |
| 12.                          | 58214503  | Brake cylinder<br>Cylindre de frein    | Bremszylinder<br>Jarrusylinteri |                                | 1                      |
| 13.                          | 58214511  | Seal kit<br>Joint torique              | Dichtungssatz<br>Tiivistesarja  |                                | 1                      |
| 14.                          | 58214495  | Spring<br>Ressort                      | Feder<br>Palautusjousi          |                                | 1                      |
| 15.                          | 58214487  | Brake shoe<br>Mâchoire de frein        | Bremsbacke<br>Jarrukenkä        |                                | 1                      |
| 16.                          | 58214529  | Brake axle<br>Essieu de frein          | Bremsachse<br>Jarruakseli       |                                | 1                      |
| 17.                          | 58214461  | Brake drum<br>Tambour de frein         | Bremstrommel<br>Jarrurumpu      |                                | 1                      |



# VARIO 101

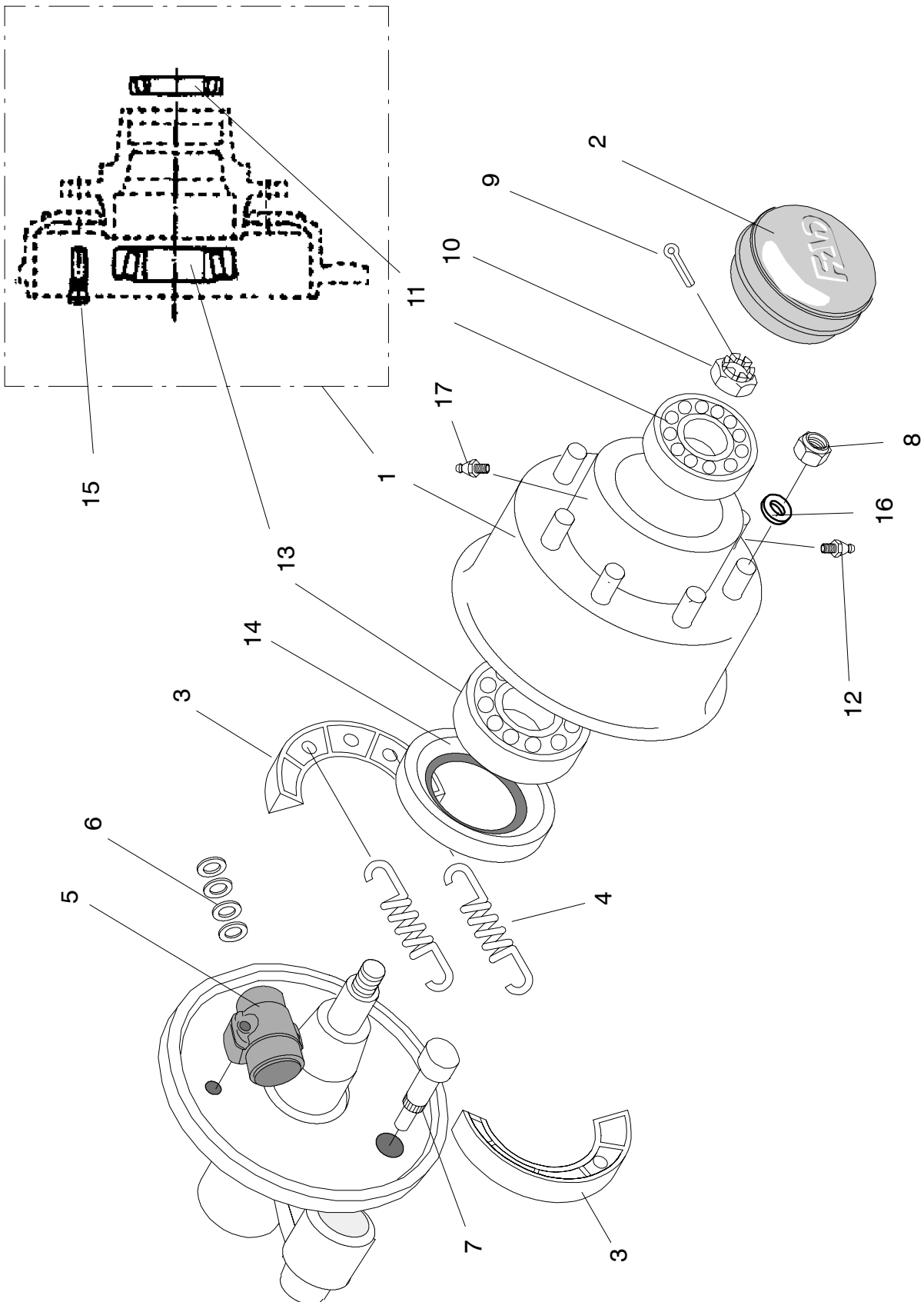
54843370 Hub, without brake, 8-bolts, compl. – Nabe, ohne Bremse, 8-Bolzen, komplet.  
Moyeu, sans frein, 8 boulons, compl. – Napa jarruton 8-pulttinen, Koonta



| Part<br>Teil<br>Pièce<br>Osa | Order No.<br>Best Nr.<br>No. de ordre<br>Tilausnumero | Description<br>Bezeichnung<br>Désignation<br>Osan nimi | Remarks<br>Obs<br>Obs<br>Huom.         | Pc<br>St.<br>Pc<br>Kpl    |
|------------------------------|---|--|--|---------------------------|
| 1. ....                      | 58218058  | Dust cover .....<br>Couvercle pare-poussière           | Schutzkappe .....<br>Pölysuoja         | 1                         |
| 2. ....                      | 52813193  | Split pin .....<br>Goupille fendue                     | Scherensplint .....<br>Saksisokka      | 6,0 x 60<br>1             |
| 3. ....                      | 58218041  | Castle nut .....<br>Ecrou crénelé                      | Kronenmutter .....<br>Kruunumutteri    | M45X2<br>1                |
| 4. ....                      | 58218017  | Bearing .....<br>Palier                                | Lager .....<br>Kuulalaakeri            | 1                         |
| 5. ....                      | 58220658  | Grease nipple .....<br>Graisseur                       | Schmiernippel .....<br>Rasvanippa      | 1                         |
| 6. ....                      | 81734576  | Housing .....<br>Carter                                | Gehäuse .....<br>Laakeripesä           | incl. parts. 4, 7, 9<br>1 |
| 7. ....                      | 58218025  | Bearing .....<br>Palier                                | Lager .....<br>Kuulalaakeri            | 1                         |
| 8. ....                      | 58218033  | Seal plate .....<br>Plaque d'étanchéité                | Dichtung .....<br>Tiivistelevy         | 1                         |
| 9. ....                      | 58218165  | Bolt .....<br>Boulon                                   | Bolzen .....<br>Pultti                 | M20X1,5<br>8              |
| 10. ....                     | 58218074  | Nut .....<br>Ecrou                                     | Mutter .....<br>Mutteri                | M20X1,5<br>8              |
| 11. ....                     | 58218132  | Washer .....<br>Rondelle                               | Scheibe .....<br>Aluslevy              | 34/20.5x8<br>8            |
| 12. ....                     | 58218751  | Bleed screw .....<br>Vis de purge                      | Entlüftungsnippel .....<br>Ilmausruuvi | M8<br>1                   |

# VARIO 101

54843388 Hub, with brake, 8-bolts, compl. – Nabe, mit Bremse, 8-Bolzen, komplet.  
Moyeu, avec frein, 8 boulons, compl. – Jarrullinen napa 8-pulttinen, koonta

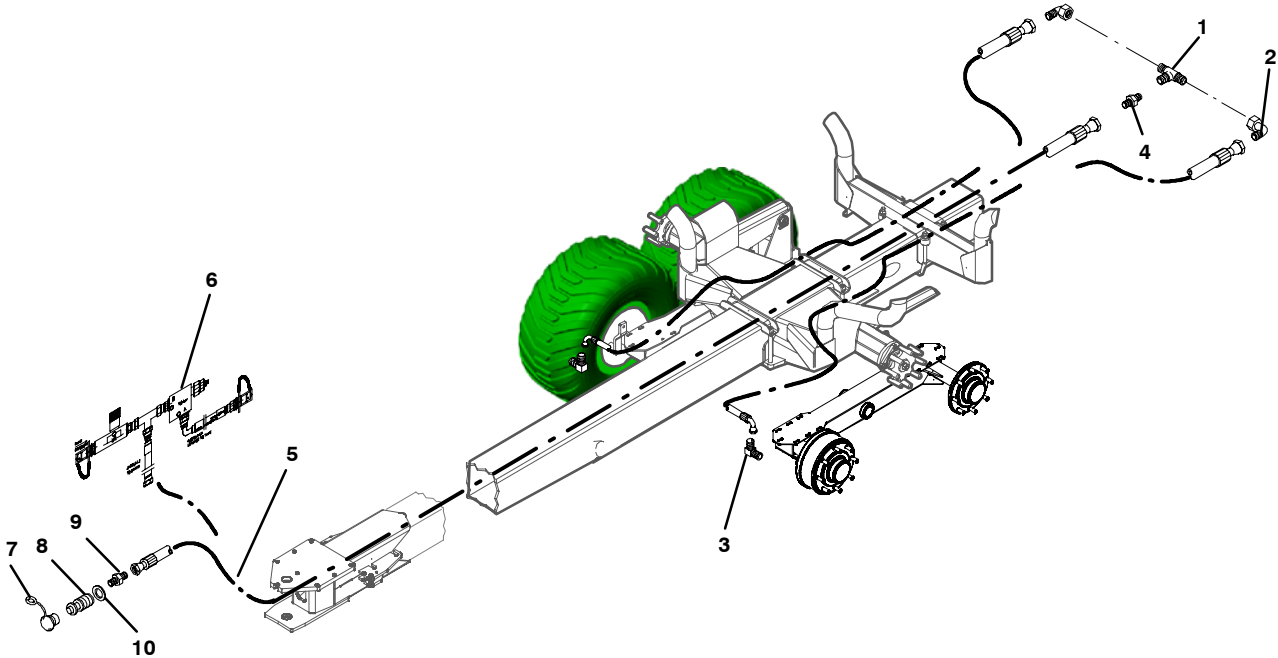


# VARIO 101

| Part<br>Teil<br>Pièce<br>Osa | Order No.<br>Best Nr.<br>No. de ordre<br>Tilausnumero | Description<br>Désignation          | Bezeichnung<br>Osan nimi         | Remarks<br>Obs<br>Obs<br>Huom. | Pc<br>St.<br>Pc<br>Kpl |
|------------------------------|---|-------------------------------------|----------------------------------|--------------------------------|------------------------|
| 1. ...                       | 58218157  | Brake drum<br>Tambour de frein      | Bremstrommel<br>Jarrurumpu       | incl. parts. 11, 14, 15        | 1                      |
| 2. ....                      | 58218058  | Dust cover<br>Couvercle du tambour  | Schutzkappe<br>Pölysuoja         |                                | 1                      |
| 3. ....                      | 58218082  | Brake shoe<br>Mâchoire de frein     | Bremsbacke<br>Jarrukenkä         |                                | 2                      |
| 4. ....                      | 58218090  | Spring<br>Ressort                   | Feder<br>Jousi                   |                                | 2                      |
| 5. ....                      | 58218124  | Brake cylinder<br>Cylindre de frein | Bremszylinder<br>Jarrusylinteri  |                                | 1                      |
| 6. ....                      |   | O-ring<br>O-bague                   | O-ring<br>O-rengas               |                                | 4                      |
| 7. ....                      | 58218018  | Brake axle<br>Essieu de frein       | Bremsachse<br>Jarruakseli        |                                | 1                      |
| 8. ....                      | 58218074  | Nut<br>Écrou                        | Mutter<br>Mutteri                |                                | 8                      |
| 9. ....                      | 52813193  | Split pin<br>Goupille fendue        | Scherensplint<br>Saksisokka      | 6,0 x 60                       | 1                      |
| 10. ...                      | 58218041  | Castle nut<br>Écrou crénelé         | Kronenmutter<br>Kruunumutteri    |                                | 1                      |
| 11. ...                      | 58218017  | Bearing<br>Palier                   | Lager<br>Kuulalaakeri            |                                | 1                      |
| 12. ...                      | 58220658  | Grease nipple<br>Graisseur          | Schmiernippel<br>Rasvanippa      | M8                             | 1                      |
| 13. ...                      | 58218025  | Bearing<br>Palier                   | Lager<br>Kuulalaakeri            |                                | 1                      |
| 14. ...                      | 58218033  | Seal plate<br>Plaque d'étanchéité   | Dichtung<br>Tiivistelevy         |                                | 1                      |
| 15. ...                      | 58218066  | Bolt<br>Boulon                      | Bolzen<br>Pultti                 |                                | 8                      |
| 16. ...                      | 58218132  | Washer<br>Rondelle                  | Scheibe<br>Aluslevy              |                                | 8                      |
| 17. ...                      | 58218751  | Bleed screw<br>Vis de purge         | Entlüftungsnippel<br>Ilmausruuvi | M8                             | 1                      |

# VARIO 101

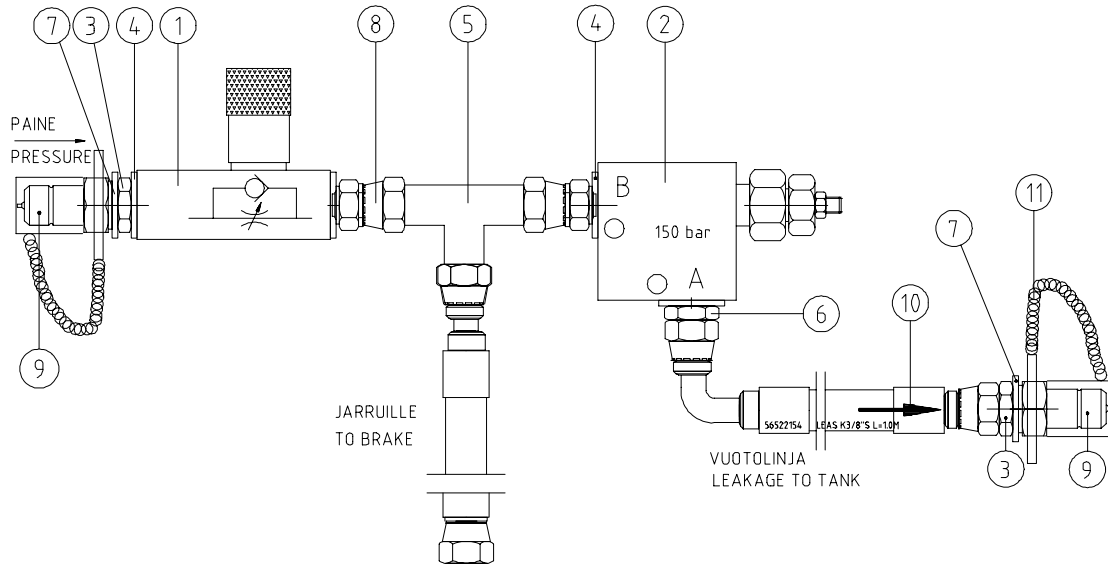
04074140 VARIO 101 HYDRAULIC BRAKES, accessory  
 VARIO 100 HYDRAULISCHE BREMSE, Zubehör  
 FREINS HYDRAULIQUES VARIO 101, accessoire  
 VARIO 101, HYDRAULIJARRUT, lisävaruste



| Part<br>Teil<br>Pièce<br>Osa | Order No.<br>Best Nr.<br>No. de ordre<br>Tilausnumero | Description<br>Bezeichnung<br>Désignation<br>Osan nimi                            | Remarks<br>Obs<br>Obs<br>Huom.                                      | Pc<br>St.<br>Pc<br>Kpl |
|------------------------------|---|---|---|------------------------|
| 1. ....                      | 52435880  | T-fitting<br>Raccord T  | T-nippel<br>Mittarinippa<br>R1/4"                                   | 1                      |
| 2. ....                      | 52442761  | Angle nipple<br>Raccord d'angle   | Winkelnippel<br>Kulmanippa<br>R1/4"                                 | 1                      |
| 3. ....                      | 52442340  | Angle nipple<br>Raccord d'angle   | Winkelnippel<br>Kulmanippa<br>RK1/4"                                | 2                      |
| 4. ....                      | 52432119  | Double fitting<br>Raccord double  | Doppelnippel<br>Kaksoisnippa<br>R1/4" - R3/8"                       | 1                      |
| 5. ....                      | 04092610  | Hose assy<br>Ensemble de tuyaux   | Schlauchsatz<br>Jarruletkusarja                                     | 1                      |
| 6. ....                      | 43309530  | Brake pressure limiter (optional)<br>Limiteur de pression de freinage (en option) | Bremsdruckbegrenzer (option)<br>Jarrupaineen rajoitus (lisävaruste) | 1                      |
| 7. ....                      | 54922141  | Cap<br>Capuchon   | Schutzstopfen<br>Suojahattu   | 1                      |
| 8. ....                      | 52449022  | Quick fitting<br>Accouplement rapide  | Schnappkupplung<br>Pikaliitinnippa                                  | 1                      |
| 9. ....                      | 52432010  | Double fitting<br>Raccord double  | Doppelnippel<br>Kaksoisnippa<br>R3/8"-R1/2"                         | 1                      |
| 10. ....                     | 52390200  | Usit-ring<br>Usit-bague   | Usit-Ring<br>Usit-rengas  | 1                      |

# VARIO 101

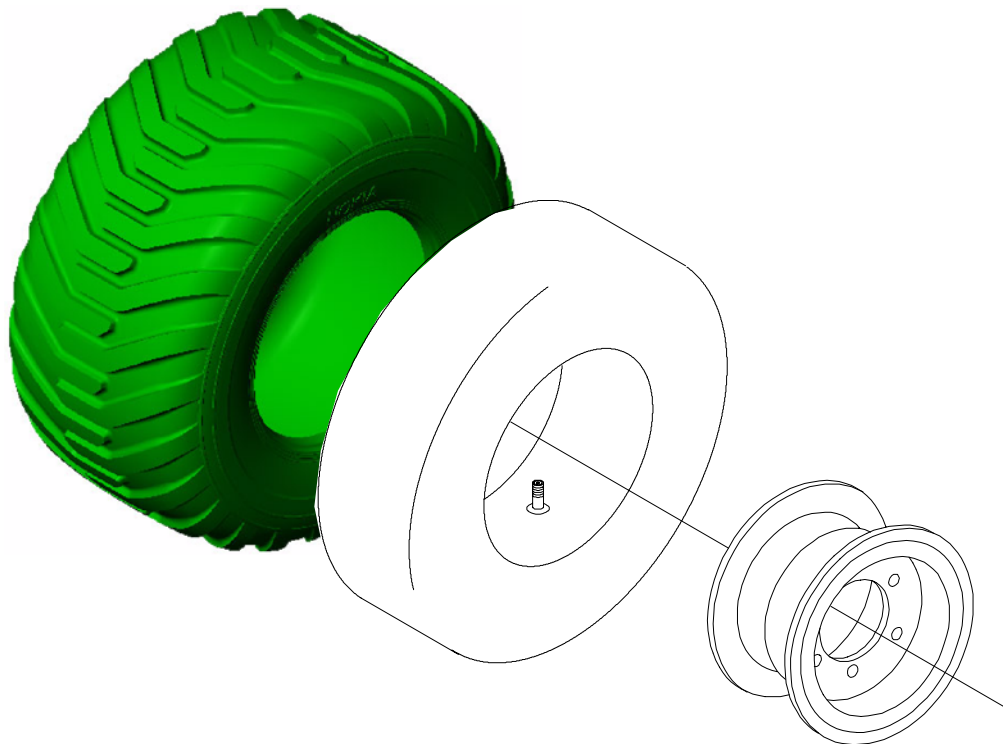
**43309530 . Brake pressure limiter, compl. – Bremsdruckbegrenzer, komplet.  
Limiteur de pression de freinage, compl. – Jarruvoiman säätö, koonta**



| Part<br>Teil<br>Pièce<br>Osa | Order No.<br>Best Nr.<br>No. de ordre<br>Tilausnumero | Description<br>Bezeichnung<br>Désignation<br>Osan nimi                           | Remarks<br>Obs<br>Obs<br>Huom. | Pc<br>St.<br>Pc<br>Kpl |
|------------------------------|---|--|--------------------------------|------------------------|
| 1.                           | 56013212  | Restrictor valve<br>Soupape du dispositif de restriction<br>Vastusvastaventtiili | Rückschlagventil R3/8"         | 1                      |
| 2.                           | 56043599  | Pressure relief valve<br>Soupape de décharge<br>Painerajaventtiili               | Druckventil                    | 1                      |
| 3.                           | 52432010  | Double fitting<br>Raccord double<br>Kaksoisnippa                                 | Doppelnippel R3/8" – 1/2"      | 2                      |
| 4.                           | 52390556  | Usit-ring<br>Anneau d'étanchéité<br>Usit-rengas                                  | Usit-Ring U17, 4x24,0x1,5      | 4                      |
| 5.                           | 52443678  | T-fitting<br>Raccord T<br>T-nippa  | T-nippel R3/8"                 | 1                      |
| 6.                           | 52432028  | Double fitting<br>Raccord double<br>Kaksoisnippa                                 | Doppelnippel R3/8"             | 1                      |
| 7.                           | 52390200  | Usit-ring<br>Anneau d'étanchéité<br>Usit-rengas                                  | Usit-Ring U21,5x28,7x2,5       | 2                      |
| 8.                           | 52435765  | Connecting fitting<br>Raccord de connexion<br>Yhdysnippa                         | Verbindungsnippel R3/8"        | 2                      |
| 9.                           | 52449022  | Quick fitting<br>Accouplement rapide<br>Pikaliitinnippa                          | Schnappkupplung R1/2"          | 2                      |
| 10.                          | 40140345  | Tape<br>Ruban<br>Teippi  | Aufkleber                      | 1                      |
| 11.                          | 54922141  | Cap<br>Bouchon<br>Suojahattu   | Schutz 1/2"                    | 2                      |

# VARIO 101

Tyres, compl. – Reifen, komplet – Tuyau de cylindre – Rengas, koonta



| Part<br>Teil<br>Pièce<br>Osa | Order No.<br>Best Nr.<br>No. de ordre<br>Tilanusnumero | Description<br>Désignation                   | Bezeichnung<br>Osan nimi                | Remarks<br>Obs<br>Obs<br>Huom. | Pc<br>St.<br>Pc<br>Kpl |
|------------------------------|--|--|---|--------------------------------|------------------------|
| 1. ....                      | - .....  | Tyres, compl. ....<br>Tuyau de cylindre .... | Reifen, komplet .....<br>Rengas, koonta | 400/60-15,5 TT PR14 .....      | 1                      |
| 2. ....                      | - .....  | Tyres, compl. ....<br>Tuyau de cylindre .... | Reifen, komplet .....<br>Rengas, koonta | 500/50-17 TT PR14 .....        | 1                      |
| 3. ....                      | - .....  | Tyres, compl. ....<br>Tuyau de cylindre .... | Reifen, komplet .....<br>Rengas, koonta | 16/70-20 TT PR14 .....         | 1                      |
| 4. ....                      | - .....  | Tyres, compl. ....<br>Tuyau de cylindre .... | Reifen, komplet .....<br>Rengas, koonta | 400/60-15,5 ELS PR14 .....     | 1                      |
| 5. ....                      | - .....  | Tyres, compl. ....<br>Tuyau de cylindre .... | Reifen, komplet .....<br>Rengas, koonta | 500/55-17 ELS PR12 .....       | 1                      |
| 6. ....                      | - .....  | Tyres, compl. ....<br>Tuyau de cylindre .... | Reifen, komplet .....<br>Rengas, koonta | 550/45-22,5 ELS F328 PR16      | 1                      |
| 7. ....                      | - .....  | Tyres, compl. ....<br>Tuyau de cylindre .... | Reifen, komplet .....<br>Rengas, koonta | 500/60-22,5 F328, PR16 ....    | 1                      |
| 8. ....                      | - .....  | Tyres, compl. ....<br>Tuyau de cylindre .... | Reifen, komplet .....<br>Rengas, koonta | 600/50-22,5 F328, PR16 ....    | 1                      |



A series of horizontal dashed lines for handwriting practice, arranged in 20 rows across the page.



A series of horizontal dashed lines for handwriting practice, arranged in 20 rows across the page.



# GUARANTEE

**Farmi Forest** products are guaranteed to be free from defects in materials and workmanship for 12 months from the date of purchase.

This warranty does not cover defects resulting from:

- misuse of the product
- inadequate maintenance
- modifications of the product made without the manufacturer's consent

The warranty is effective only, if the lower portion of this page is completed and returned to the manufacturer within 14 days of receipt of the product..

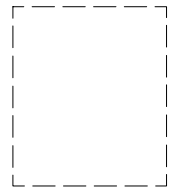
## Important

Before putting your FARMI to use, be sure to read the instruction and service booklet provided with the machine

**Farmi Forest Corporation**

**Ahmolantie 6**

**74510 IISALMI**



**Farmi Forest Corporation**

Ahmolantie 6

FIN-74 510 IISALMI

FINLAND



Date of delivery: \_\_\_\_ / \_\_\_\_ 20 \_\_\_\_

Dealer: \_\_\_\_\_

Dealer's address: \_\_\_\_\_

Dealer's tel: \_\_\_\_\_

Product and type: \_\_\_\_\_

Serial number: \_\_\_\_\_



Return to the manufacturer

Date of delivery: \_\_\_\_ / \_\_\_\_ 20 \_\_\_\_

Dealer: \_\_\_\_\_

Dealer's address: \_\_\_\_\_

Dealer's tel: \_\_\_\_\_

Customer: \_\_\_\_\_

Customer's address: \_\_\_\_\_

Customer's tel: \_\_\_\_\_

Product and type: \_\_\_\_\_

Serial number: \_\_\_\_\_

Notes: \_\_\_\_\_

\_\_\_\_\_





# FARMI®

Forest  
Made in Finland

